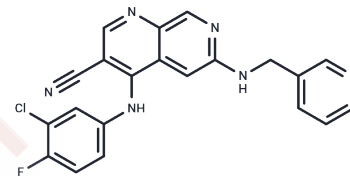


Tpl2 Kinase Inhibitor 1

Chemical Properties

CAS No. :	871307-18-5
Formula:	C ₂₁ H ₁₄ ClFN ₆
Molecular Weight:	404.83
Storage:	Keep away from moisture Powder: -20°C for 3 years In solvent: -80°C for 1 year <small>Actual storage temperature shall be subject to the COA.</small>



Biological Description

Description	Tpl2 Kinase Inhibitor 1 is a potent, reversible, and highly selective ATP-competitive inhibitor of Tpl2 (MAP3K8/COT) serine/threonine kinase, with an IC ₅₀ of 50 nM for Tpl2 kinase inhibition. In vitro, Tpl2 Kinase Inhibitor 1 inhibits LPS-induced TNF- α release from human primary monocytes (IC ₅₀ = 0.7 μ M). Tpl2 Kinase Inhibitor 1 can be used in research on inflammatory responses and certain cancers.
Targets(IC50)	Others,MAPK,p38 MAPK
In vitro	Tpl2 Kinase Inhibitor 1 inhibits the production of TNF- α in human primary monocytes and human whole blood induced by lipopolysaccharide, with IC ₅₀ values of 0.7 μ M and 8.5 μ M, respectively .[1]

Solubility Information

Solubility	DMSO: 80 mg/mL (197.61 mM),Sonication is recommended. (< 1 mg/ml refers to the product slightly soluble or insoluble)
------------	--

Preparing Stock Solutions

	1mg	5mg	10mg
1 mM	2.4702 mL	12.3509 mL	24.7017 mL
5 mM	0.494 mL	2.4702 mL	4.9403 mL
10 mM	0.247 mL	1.2351 mL	2.4702 mL
50 mM	0.0494 mL	0.247 mL	0.494 mL

Please select the appropriate solvent to prepare the stock solution, according to the solubility of the product in different solvents. Please use it as soon as possible.

Note: The dilution table applies only to solid products. For liquid products, please calculate the stock solution based on the stated concentration and/or density.

Reference

Gavrin LK, Green N, Hu Y, et al. Inhibition of Tpl2 kinase and TNF-alpha production with 1,7-naphthyridine-3-carbonitriles: synthesis and structure-activity relationships. *Bioorg Med Chem Lett.* 2005;15(23):5288-5292.

Inhibitor · Natural Compounds · Compound Libraries · Recombinant Proteins

This product is for Research Use Only · Not for Human or Veterinary or Therapeutic Use

Tel:781-999-4286 E_mail:info@targetmol.com Address:34 Washington Street,Wellesley Hills,MA 02481