

ferritin heavy chain fragment [Multiple species]

Chemical Properties

CAS No. :

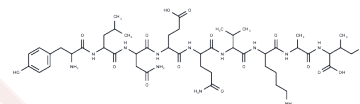
Formula: C49H80N12O15

Molecular Weight: 1077.23

Keep away from moisture

Storage: Powder: -20°C for 3 years | In solvent: -80°C for 1 year

Actual storage temperature shall be subject to the COA.



Biological Description

| | |
|---------------|--|
| Description | Ferritin is a protein of 450 kDa consisting of 24 subunits that is present in every cell type. Invertebrates, these subunits are both the light (L) and the heavy (H) type with an apparent molecular weight of 19 kDa or 21 kDa respectively. The ferritin found in cancer cells was found to consist mainly of H chains. The heavy chain of Ferritin also possesses ferroxidase activity, this involves the conversion of iron from the ferrous (Fe ²⁺) to ferric (Fe ³⁺) forms [1][2][3][4]. |
| Targets(IC50) | Others |
| In vitro | If the ferritin level is low, there is a risk for lack of iron, which could lead to anemia. If ferritin is high, there is iron in excess or else there is an acute inflammatory reaction in which ferritin is mobilized without iron excess. For example, ferritins may be high in infection without signaling body iron overload. Ferritin is also used as a marker for iron overload disorders, such as hemochromatosis or hemosiderosis. Recent research has shown that H-Ferritin from melanoma cells may suppress immune responses [5][6][7]. |

Solubility Information

| | |
|------------|---|
| Solubility | DMSO: ≥107.7 mg/mL, Sonication is recommended. (< 1 mg/ml refers to the product slightly soluble or insoluble) |
|------------|---|

Preparing Stock Solutions

| | 1mg | 5mg | 10mg |
|-------|------------|------------|-------------|
| 1 mM | 0.9283 mL | 4.6415 mL | 9.2831 mL |
| 5 mM | 0.1857 mL | 0.9283 mL | 1.8566 mL |
| 10 mM | 0.0928 mL | 0.4642 mL | 0.9283 mL |
| 50 mM | 0.0186 mL | 0.0928 mL | 0.1857 mL |

Please select the appropriate solvent to prepare the stock solution, according to the solubility of the product in different solvents. Please use it as soon as possible.

Note: The dilution table applies only to solid products. For liquid products, please calculate the stock solution based on the stated concentration and/or density.

Inhibitor · Natural Compounds · Compound Libraries · Recombinant Proteins

This product is for Research Use Only · Not for Human or Veterinary or Therapeutic Use

Tel:781-999-4286 E_mail:info@targetmol.com Address:34 Washington Street,Wellesley Hills,MA 02481