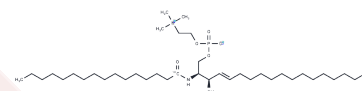


13C C16 Sphingomyelin (d18:1/16:0)

Chemical Properties

CAS No. :	144236-99-7
Formula:	C39H79N2O6P
Molecular Weight:	704.035
Storage:	Powder: -20°C for 3 years In solvent: -80°C for 1 year Actual storage temperature shall be subject to the COA.



Biological Description

Description	13C C16 Sphingomyelin (D18:1/16:0) is an isotopically enriched form of C16 sphingomyelin with carbon-13 occurring on the fatty acid portion. It is intended for use as an internal standard for the quantification of C16 sphingomyelin by GC- or LC-MS. C16 Sphingomyelin is a form of sphingomyelin containing palmitate (16:0) at the variable acylation position. It is the most common form of sphingomyelin found in eggs and is less abundant in the brain and in milk. C16 Sphingomyelin interacts with cholesterol in ordered lipid domains (lipid rafts). Sphingomyelinases remove phosphorylcholine from C16 sphingomyelin to produce C16 ceramide. While ceramides commonly induce apoptosis, ceramides with different fatty acid chain lengths might direct distinct functions and, in some cases, reduce apoptosis.
Targets(IC50)	Endogenous Metabolite,Liposome

Solubility Information

Solubility	Chloroform: Soluble Ethanol: Soluble Methanol: Soluble (< 1 mg/ml refers to the product slightly soluble or insoluble)
------------	--

Preparing Stock Solutions

	1mg	5mg	10mg
1 mM	1.4204 mL	7.1019 mL	14.2037 mL
5 mM	0.2841 mL	1.4204 mL	2.8407 mL
10 mM	0.142 mL	0.7102 mL	1.4204 mL
50 mM	0.0284 mL	0.142 mL	0.2841 mL

Please select the appropriate solvent to prepare the stock solution, according to the solubility of the product in different solvents. Please use it as soon as possible.

Note: The dilution table applies only to solid products. For liquid products, please calculate the stock solution based on the stated concentration and/or density.

Inhibitor · Natural Compounds · Compound Libraries · Recombinant Proteins

This product is for Research Use Only · Not for Human or Veterinary or Therapeutic Use

Tel:781-999-4286 E_mail:info@targetmol.com Address:34 Washington Street,Wellesley Hills,MA 02481