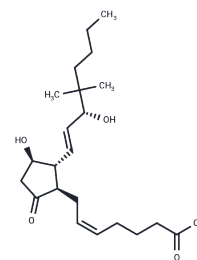


16,16-Dimethyl prostaglandin E2

Chemical Properties

CAS No. :	39746-25-3
Formula:	C ₂₂ H ₃₆ O ₅
Molecular Weight:	380.52
Storage:	Powder: -20°C for 3 years In solvent: -80°C for 1 year Actual storage temperature shall be subject to the COA.



Biological Description

Description	16,16-Dimethyl prostaglandin E2 is an orally active vertebrate Hematopoietic stem cells homeostasis critical regulator. It can act through EP2/EP4 and has an interaction with the Wnt pathway.
Targets(IC50)	Prostaglandin Receptor, Wnt/beta-catenin
In vivo	16,16-Dimethyl prostaglandin E2 (10 µg/kg; i.p.; every 12 hours; for 8 days) rescues the exacerbated DSS colitis phenotype of Tpl2IMF-KO mice and restores epithelial proliferation and structure.
Animal Research	Animal Model: Tpl2I(MF-KO) mice. Dosage: 10 µg/kg. Administration: IP; every 12 hours; for 8 days [2]

Preparing Stock Solutions

	1mg	5mg	10mg
1 mM	2.628 mL	13.1399 mL	26.2798 mL
5 mM	0.5256 mL	2.628 mL	5.256 mL
10 mM	0.2628 mL	1.314 mL	2.628 mL
50 mM	0.0526 mL	0.2628 mL	0.5256 mL

Please select the appropriate solvent to prepare the stock solution, according to the solubility of the product in different solvents. Please use it as soon as possible.

Note: The dilution table applies only to solid products. For liquid products, please calculate the stock solution based on the stated concentration and/or density.

Reference

- Hagedorn EJ, et al. Getting more for your marrow: boosting hematopoietic stem cell numbers with PGE₂. *xp Cell Res.* 2014 Dec 10;329(2):220-6.
- Roulis M, et al. Intestinal myofibroblast-specific Tpl2-Cox-2-PGE₂ pathway links innate sensing to epithelial homeostasis. *Proc Natl Acad Sci U S A.* 2014 Oct 28;111(43):E4658-67.

Inhibitor · Natural Compounds · Compound Libraries · Recombinant Proteins

This product is for Research Use Only · Not for Human or Veterinary or Therapeutic Use

Tel:781-999-4286 E_mail:info@targetmol.com Address:34 Washington Street,Wellesley Hills,MA 02481