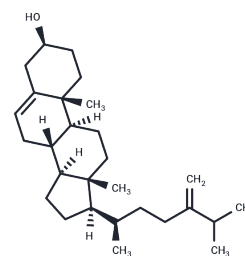


24-Methylenecholesterol

Chemical Properties

CAS No. :	474-63-5
Formula:	C ₂₈ H ₄₆ O
Molecular Weight:	398.66
Storage:	Store at low temperature Powder: -20°C for 3 years In solvent: -80°C for 1 year <small>Actual storage temperature shall be subject to the COA.</small>



Biological Description

Description	24-Methylenecholesterol (24 Methylenecholesterol) is a natural marine sterol, which stimulates cholesterol acyl transferase (ACAT) in human macrophages.
Targets(IC50)	Acyltransferase,ROS

Preparing Stock Solutions

	1mg	5mg	10mg
1 mM	2.5084 mL	12.542 mL	25.084 mL
5 mM	0.5017 mL	2.5084 mL	5.0168 mL
10 mM	0.2508 mL	1.2542 mL	2.5084 mL
50 mM	0.0502 mL	0.2508 mL	0.5017 mL

Please select the appropriate solvent to prepare the stock solution, according to the solubility of the product in different solvents. Please use it as soon as possible.

Note: The dilution table applies only to solid products. For liquid products, please calculate the stock solution based on the stated concentration and/or density.

Reference

- Tsukagoshi Y, et al. Ajuga Δ 24-Sterol Reductase Catalyzes the Direct Reductive Conversion of 24-Methylenecholesterol to Campesterol. *J Biol Chem.* 2016 Apr 8;291(15):8189-98.
- Nasu K, et al. Stereochemical fate of C-26 and C-27 during the conversion of isofucosterol to sitosterol and of 24-methylenecholesterol to campesterol and dihydrobrassicasterol in *Oryza sativa* cell cultures. *Phytochemistry.* 2000 Jun;54(4):381-5.
- Choe S, et al. The Arabidopsis dwarf1 mutant is defective in the conversion of 24-methylenecholesterol to campesterol in brassinosteroid biosynthesis. *Plant Physiol.* 1999 Mar;119(3):897-907.
- Barbier M. Isolation of 24-methylenecholesterol-derived oxidation products from queen honeybee ovaries (*Apis mellifica* L.). *J Chem Ecol.* 1987 Jul;13(7):1681-7.

Inhibitor · Natural Compounds · Compound Libraries · Recombinant Proteins

This product is for Research Use Only · Not for Human or Veterinary or Therapeutic Use

Tel:781-999-4286 E_mail:info@targetmol.com Address:34 Washington Street,Wellesley Hills,MA 02481