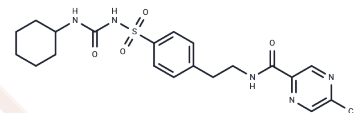


Glipizide

Chemical Properties

CAS No. :	29094-61-9
Formula:	C ₂₁ H ₂₇ N ₅ O ₄ S
Molecular Weight:	445.54
Storage:	Powder: -20°C for 3 years In solvent: -80°C for 1 year Actual storage temperature shall be subject to the COA.



Biological Description

Description	Glipizide (CP 28720) is a short-acting, second-generation sulfonylurea with hypoglycemic activity.
Targets(IC50)	ABC Transporter, Potassium Channel, PPAR
Kinase Assay	The activity of caspase-3, -8 and -9 is assessed using the caspase-3, -8 and -9 colorimetric assay kits, respectively. In brief, 1×10 ⁶ cells in a 60-mm culture dish are incubated with 10 mM Valproic acid for 24 h. The cells are then washed in PBS and suspended in 5 volumes of lysis buffer provided with the kit. Protein concentrations are determined using the Bradford method. Supernatants containing 50 µg total protein are used to determine caspase-3, -8 and -9 activities. The supernatants are added to each well in 96-well microtiter plates with DEVD-pNA, IETD-pNA or LEHD-pNA as caspase-3, -8 and -9 substrates and the plates are incubated at 37°C for 1 h. The optical density of each well is measured at 405 nm using a microplate reader. The activity of caspase-3, -8 and -9 is expressed in arbitrary absorbance units.

Solubility Information

Solubility	DMSO: 82 mg/mL (184.05 mM), Sonication is recommended. Ethanol: < 1 mg/mL (insoluble or slightly soluble), (< 1 mg/ml refers to the product slightly soluble or insoluble)
In vivo Formulation	10% DMSO+90% Corn Oil: 3.3 mg/mL (7.41 mM), Sonication is recommended. <i>Please add the solvents sequentially, clarifying the solution as much as possible before adding the next one. Dissolve by heating and/or sonication if necessary. Working solution is recommended to be prepared and used immediately. The formulation provided above is for reference purposes only. In vivo formulations may vary and should be modified based on specific experimental conditions.</i>

Preparing Stock Solutions

	1mg	5mg	10mg
1 mM	2.2445 mL	11.2223 mL	22.4447 mL
5 mM	0.4489 mL	2.2445 mL	4.4889 mL
10 mM	0.2244 mL	1.1222 mL	2.2445 mL
50 mM	0.0449 mL	0.2244 mL	0.4489 mL

Please select the appropriate solvent to prepare the stock solution, according to the solubility of the product in different solvents. Please use it as soon as possible.

Note: The dilution table applies only to solid products. For liquid products, please calculate the stock solution based on the stated concentration and/or density.

Reference

Gribble FM, Ashcroft FM. Metabolism. 2000 Oct;49(10 Suppl 2):3-6.

Inhibitor · Natural Compounds · Compound Libraries · Recombinant Proteins

This product is for Research Use Only · Not for Human or Veterinary or Therapeutic Use

Tel:781-999-4286 E_mail:info@targetmol.com Address:34 Washington Street,Wellesley Hills,MA 02481