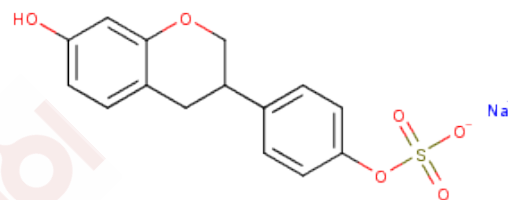


(±)-Equol 4'-sulfate (sodium salt)**Chemical Properties**

CAS No. :	1189685-28-6
Formula:	C ₁₅ H ₁₃ NaO ₆ S
Molecular Weight:	344.32
Storage:	Powder: -20°C for 3 years In solvent: -80°C for 1 year Actual storage temperature shall be subject to the COA.

**Biological Description**

Description	(±)-Equol 4'-sulfate is a gut-mediated phase II metabolite of the isoflavonoid phytoestrogen (±)-equol. [1] It has been used as a standard for the quantification of unconjugated equol in rat plasma. [2]
Targets(IC50)	Others, Endogenous Metabolite

Solubility Information

Solubility	Methanol: Slightly Soluble (< 1 mg/ml refers to the product slightly soluble or insoluble)
------------	--

Preparing Stock Solutions

	1mg	5mg	10mg
1 mM	2.9043 mL	14.5214 mL	29.0428 mL
5 mM	0.5809 mL	2.9043 mL	5.8086 mL
10 mM	0.2904 mL	1.4521 mL	2.9043 mL
50 mM	0.0581 mL	0.2904 mL	0.5809 mL

Please select the appropriate solvent to prepare the stock solution, according to the solubility of the product in different solvents. Please use it as soon as possible.

Note: The dilution table applies only to solid products. For liquid products, please calculate the stock solution based on the stated concentration and/or density.

Reference

Lee, D.-H., Kim, M.J., Lee, S.H., et al. Nutrikinetics of isoflavone metabolites after fermented soybean product (Cheonggukjang) ingestion in ovariectomized mice. Mol. Nutr. Food Res. 61(12), (2017).

Gavina, J.M., Priem, J., Wood, C.M., et al. Determination of isoflavones in rat serum using liquid chromatography-tandem mass spectrometry with a highly efficient core-shell column. Anal. Bioanal. Chem. 405(8), 2643-2651 (2013).

Inhibitor · Natural Compounds · Compound Libraries · Recombinant Proteins

This product is for Research Use Only · Not for Human or Veterinary or Therapeutic Use

Tel:781-999-4286 E_mail:info@targetmol.com Address:34 Washington Street,Wellesley Hills,MA 02481