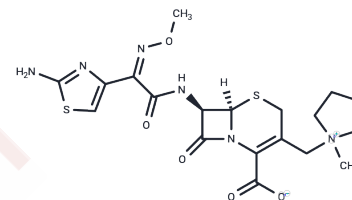


Cefepime

Chemical Properties

CAS No. :	88040-23-7
Formula:	C ₁₉ H ₂₄ N ₆ O ₅ S ₂
Molecular Weight:	480.56
Storage:	Powder: -20°C for 3 years In solvent: -80°C for 1 year Actual storage temperature shall be subject to the COA.



Biological Description

Description	Cefepime (BMV-28142) is a cephalosporin antibiotic with antimicrobial activity, induces neurotoxicity, inhibits both Gram-positive and Gram-negative, and can be used in the study of anaerobic bacteria.
Targets(IC50)	Antibacterial, Antibiotic
In vivo	METHODS: Mice were given different doses of cisplatin (0, 10, 14, 18, 22, and 26 mg/kg) three days before intraperitoneal (ip) injection of 80 mg/kg cefepime to determine the dose of cisplatin that would not affect mouse survival and achieve human-like serum concentrations of cefepime. RESULTS: The half-life of cefepime was significantly prolonged at cisplatin doses of 18 and 22 mg/kg. [1]

Solubility Information

Solubility	DMSO: 250 mg/mL (520.23 mM), Sonication is recommended. H ₂ O: 80 mg/mL (166.47 mM), Sonication is recommended. (< 1 mg/ml refers to the product slightly soluble or insoluble)
In vivo Formulation	10% DMSO+40% PEG300+5% Tween 80+45% Saline: 4 mg/mL (8.32 mM), Sonication is recommended. 10% DMSO+90% Saline: 10 mg/mL (20.81 mM), Solution. <i>Please add the solvents sequentially, clarifying the solution as much as possible before adding the next one. Dissolve by heating and/or sonication if necessary. Working solution is recommended to be prepared and used immediately. The formulation provided above is for reference purposes only. In vivo formulations may vary and should be modified based on specific experimental conditions.</i>

Preparing Stock Solutions

	1mg	5mg	10mg
1 mM	2.0809 mL	10.4045 mL	20.8091 mL
5 mM	0.4162 mL	2.0809 mL	4.1618 mL
10 mM	0.2081 mL	1.0405 mL	2.0809 mL
50 mM	0.0416 mL	0.2081 mL	0.4162 mL

Please select the appropriate solvent to prepare the stock solution, according to the solubility of the product in different solvents. Please use it as soon as possible.

Note: The dilution table applies only to solid products. For liquid products, please calculate the stock solution based on the stated concentration and/or density.

Reference

- Máthé A, et al. The effect of different doses of cisplatin on the pharmacokinetic parameters of cefepime in mice. *Lab Anim.* 2006 Jul;40(3):296-300.
- Saito H, et al; Central Japan Lung Study Group. Cefepime monotherapy for febrile neutropenia in patients with lung cancer. *J Infect Chemother.* 2014 Jun;20(6):365-9.
- Fugate JE, et al. Cefepime neurotoxicity in the intensive care unit: a cause of severe, underappreciated encephalopathy. *Crit Care.* 2013 Nov 7;17(6):R264.
- Nguyen HM, Shier KL, Graber CJ. Determining a clinical framework for use of cefepime and β -lactam/ β -lactamase inhibitors in the treatment of infections caused by extended-spectrum- β -lactamase-producing Enterobacteriaceae. *J Antimicrob Chemother.* 2014 Apr;69(4):871-80. doi: 10.1093/jac/dkt450. Epub 2013 Nov 20. Review. PubMed PMID: 24265230.

Inhibitor · Natural Compounds · Compound Libraries · Recombinant Proteins

This product is for Research Use Only · Not for Human or Veterinary or Therapeutic Use

Tel:781-999-4286 E_mail:info@targetmol.com Address:34 Washington Street,Wellesley Hills,MA 02481