

(E/Z)-E64FC26

Chemical Properties

CAS No. : 2285446-67-3

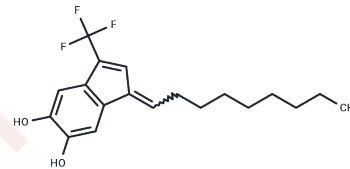
Formula: C19H23F3O2

Molecular Weight: 340.38

Store at low temperature

Storage: Powder: -20°C for 3 years | In solvent: -80°C for 1 year

Actual storage temperature shall be subject to the COA.



Biological Description

Description	(E/Z)-E64FC26 is a potent protein disulfide isomerase (PDI) family inhibitor with potential antitumor activity and affinity for PDIA1, PDIA3, PDIA4, TXNDC5 and PDIA6. (E/Z)-E64FC26 can be used for myeloma research.
Targets(IC50)	Apoptosis
In vitro	(E/Z)-E64FC26 is an effective broad-spectrum inhibitor of the protein disulfide isomerase (PDI) family, with half-maximal inhibitory concentrations (IC50) of 1.9, 20.9, 25.9, 16.3, and 25.4 μ M for PDIA1, PDIA3, PDIA4, TXNDC5, and PDIA6, respectively. Additionally, (E/Z)-E64FC26 demonstrates anti-myeloma activity. [1][2]

Solubility Information

Solubility	DMSO: 80 mg/mL (235.03 mM), Sonication is recommended. (< 1 mg/ml refers to the product slightly soluble or insoluble)
------------	---

Preparing Stock Solutions

	1mg	5mg	10mg
1 mM	2.9379 mL	14.6895 mL	29.3789 mL
5 mM	0.5876 mL	2.9379 mL	5.8758 mL
10 mM	0.2938 mL	1.4689 mL	2.9379 mL
50 mM	0.0588 mL	0.2938 mL	0.5876 mL

Please select the appropriate solvent to prepare the stock solution, according to the solubility of the product in different solvents. Please use it as soon as possible.

Note: The dilution table applies only to solid products. For liquid products, please calculate the stock solution based on the stated concentration and/or density.

Reference

Nathan G. Dolloff, et al. Indene derivatives and uses thereof. US20190062298A1.

Robinson RM, et al. Inhibitors of the protein disulfide isomerase family for the treatment of multiple myeloma. Leukemia. 2019 Apr;33(4):1011-1022.

Inhibitor · Natural Compounds · Compound Libraries · Recombinant Proteins

This product is for Research Use Only · Not for Human or Veterinary or Therapeutic Use

Tel:781-999-4286 E_mail:info@targetmol.com Address:34 Washington Street,Wellesley Hills,MA 02481