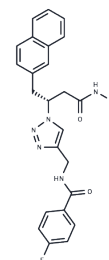


BDM44768

Chemical Properties

CAS No. : 2011754-00-8
 Formula: C₂₄H₂₂FN₅O₃
 Molecular Weight: 447.46
 Storage: Powder: -20°C for 3 years | In solvent: -80°C for 1 year
 Actual storage temperature shall be subject to the COA.



Biological Description

Description	BDM44768 is an insulin-degrading enzyme (IDE) inhibitor that acts by inducing glucose intolerance.
Targets(IC50)	Others, IRE1

Preparing Stock Solutions

	1mg	5mg	10mg
1 mM	2.2348 mL	11.1742 mL	22.3484 mL
5 mM	0.447 mL	2.2348 mL	4.4697 mL
10 mM	0.2235 mL	1.1174 mL	2.2348 mL
50 mM	0.0447 mL	0.2235 mL	0.447 mL

Please select the appropriate solvent to prepare the stock solution, according to the solubility of the product in different solvents. Please use it as soon as possible.

Note: The dilution table applies only to solid products. For liquid products, please calculate the stock solution based on the stated concentration and/or density.

Reference

Salzano G, Wankar J, Ottani S, Villemagne B, Baulard AR, Willand N, Brodin P, Manet I, Gref R. Cyclodextrin-based nanocarriers containing a synergic drug combination: A potential formulation for pulmonary administration of antitubercular drugs. *Int J Pharm.* 2017 Oct 15;531(2):577-587. doi: 10.1016/j.ijpharm.2017.05.030. Epub 2017 May 15. PubMed PMID: 28522424.

Deprez-Poulain R, Hennuyer N, Bosc D, Liang WG, Enée E, Marechal X, Charton J, Totobenazara J, Berte G, Jahklal J, Verdelet T, Dumont J, Dassonneville S, Woitrain E, Gauriot M, Paquet C, Duplan I, Hermant P, Cantrelle FX, Sevin E, Culot M, Landry V, Herledan A, Piveteau C, Lippens G, Leroux F, Tang WJ, van Endert P, Staels B, Deprez B. Catalytic site inhibition of insulin-degrading enzyme by a small molecule induces glucose intolerance in mice. *Nat Commun.* 2015 Sep 23;6:8250. doi: 10.1038/ncomms9250. PubMed PMID: 26394692; PubMed Central PMCID: PMC4580987.

Inhibitor · Natural Compounds · Compound Libraries · Recombinant Proteins

This product is for Research Use Only · Not for Human or Veterinary or Therapeutic Use

Tel:781-999-4286 E_mail:info@targetmol.com Address:34 Washington Street,Wellesley Hills,MA 02481