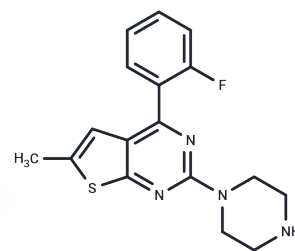


MCI-225

## Chemical Properties

CAS No. : 135991-48-9  
 Formula: C<sub>17</sub>H<sub>17</sub>FN<sub>4</sub>S  
 Molecular Weight: 328.4  
 Storage: Powder: -20°C for 3 years | In solvent: -80°C for 1 year  
 Actual storage temperature shall be subject to the COA.



## Biological Description

Description	MCI-225 is a selective inhibitor of NA reuptake with 5-HT <sub>3</sub> receptor antagonism.
Targets(IC <sub>50</sub> )	Norepinephrine
In vivo	MCI-225 (10 mg/kg, po) showed comparable anxiolytic-like effect between single and 5-day repeated administration.

## Solubility Information

Solubility	DMSO: Slightly soluble, ( $< 1$ mg/ml refers to the product slightly soluble or insoluble)
------------	---

## Preparing Stock Solutions

	1mg	5mg	10mg
1 mM	3.0451 mL	15.2253 mL	30.4507 mL
5 mM	0.609 mL	3.0451 mL	6.0901 mL
10 mM	0.3045 mL	1.5225 mL	3.0451 mL
50 mM	0.0609 mL	0.3045 mL	0.609 mL

Please select the appropriate solvent to prepare the stock solution, according to the solubility of the product in different solvents. Please use it as soon as possible.

Note: The dilution table applies only to solid products. For liquid products, please calculate the stock solution based on the stated concentration and/or density.

### Reference

Eguchi J , Inomata Y , Saito K I . The anxiolytic-like effect of MCI-225, a selective NA reuptake inhibitor with 5-HT<sub>3</sub> receptor antagonism[J]. Pharmacology Biochemistry & Behavior, 2001, 68(4):677-683.

Junichi Eguchi, Kuniyoshi Iwai, Takayuki Yuasa, et al. Effects of MCI-225 on memory and glucose utilization in basal forebrain-lesioned rats[J]. Pharmacology Biochemistry and Behavior, 1995, 51(4):935-939.

**Inhibitor · Natural Compounds · Compound Libraries · Recombinant Proteins**

This product is for Research Use Only · Not for Human or Veterinary or Therapeutic Use

Tel:781-999-4286    E\_mail:info@targetmol.com    Address:34 Washington Street,Wellesley Hills,MA 02481