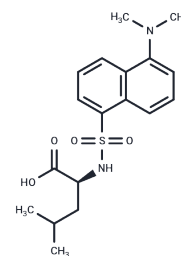


Dansylleucine

Chemical Properties

CAS No. :	1100-22-7
Formula:	C ₁₈ H ₂₄ N ₂ O ₄ S
Molecular Weight:	364.46
Storage:	Keep away from moisture Powder: -20°C for 3 years In solvent: -80°C for 1 year <small>Actual storage temperature shall be subject to the COA.</small>



Biological Description

Description	Dansylleucine is an agent of bioactive chemical.
Targets(IC50)	Amino Acids and Derivatives

Solubility Information

Solubility	DMSO: Soluble, (< 1 mg/ml refers to the product slightly soluble or insoluble)
------------	--

Preparing Stock Solutions

	1mg	5mg	10mg
1 mM	2.7438 mL	13.7189 mL	27.4379 mL
5 mM	0.5488 mL	2.7438 mL	5.4876 mL
10 mM	0.2744 mL	1.3719 mL	2.7438 mL
50 mM	0.0549 mL	0.2744 mL	0.5488 mL

Please select the appropriate solvent to prepare the stock solution, according to the solubility of the product in different solvents. Please use it as soon as possible.

Note: The dilution table applies only to solid products. For liquid products, please calculate the stock solution based on the stated concentration and/or density.

Reference

Vigh G, Quintero G, Farkas G. Displacement chromatography on cyclodextrin-silicas. III. Enantiomer separations. *J Chromatogr.* 1990 May 11;506:481-93. PubMed PMID: 2165503.

Tamura A, Khademizadeh M, Tamura K, Masujima T. Direct observation of the separation process by the chromato-videoscope. *J Pharm Biomed Anal.* 1997 Jun;15(9-10):1477-82. PubMed PMID: 9226578.

Wagner SR, Liu DK. Adrenalectomy alters acid-soluble leucine pool in rat kidney and heart. *Int J Biochem.* 1981;13(4):501-7. PubMed PMID: 7238983.

Jin HL, Stalcup A, Armstrong DW. Optical enrichment of dansyl-rac-amino acids by formation of crystalline inclusion complexes with cyclodextrins. *Chirality.* 1989;1(2):137-41. PubMed PMID: 2642042.

Inhibitor · Natural Compounds · Compound Libraries · Recombinant Proteins

This product is for Research Use Only · Not for Human or Veterinary or Therapeutic Use

Tel:781-999-4286 E_mail:info@targetmol.com Address:34 Washington Street,Wellesley Hills,MA 02481