

## 9(S)-HOTrE

## Chemical Properties

CAS No. : 89886-42-0

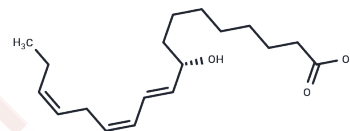
Formula: C<sub>18</sub>H<sub>30</sub>O<sub>3</sub>

Molecular Weight: 294.43

Store at low temperature

Storage: Pure form: -20°C for 3 years | In solvent: -80°C for 1 year

Actual storage temperature shall be subject to the COA.



## Biological Description

Description	9(S)-HOTrE is a plant metabolite and octadecatrienoic acid produced by the action of 5-lipoxygenase (5-LO) on $\alpha$ -linolenic acid and can be used to study metabolism.
Targets(IC50)	Others,Endogenous Metabolite

## Solubility Information

Solubility	PBS (pH 7.2): < 1 mg/mL (insoluble),Sonication is recommended. 0.1 M Na <sub>2</sub> CO <sub>3</sub> : 1 mg/mL (3.4 mM),Sonication is recommended. (< 1 mg/ml refers to the product slightly soluble or insoluble)
------------	--

## Preparing Stock Solutions

	1mg	5mg	10mg
1 mM	3.3964 mL	16.982 mL	33.9639 mL
5 mM	0.6793 mL	3.3964 mL	6.7928 mL
10 mM	0.3396 mL	1.6982 mL	3.3964 mL
50 mM	0.0679 mL	0.3396 mL	0.6793 mL

Please select the appropriate solvent to prepare the stock solution, according to the solubility of the product in different solvents. Please use it as soon as possible.

Note: The dilution table applies only to solid products. For liquid products, please calculate the stock solution based on the stated concentration and/or density.

### Reference

Grantz JM, et al. The platelet and plasma proteome and targeted lipidome in postpartum dairy cows with elevated systemic inflammation. *Sci Rep.* 2024 Dec 28;14(1):31240.

van der Krieken SE, et al. Search for Natural Compounds That Increase Apolipoprotein A-I Transcription in HepG2 Cells: Specific Attention for BRD4 Inhibitors. *Lipids.* 2019 Nov;54(11-12):687-695.

Ding R, et al. Identification of metabolic components of carotid plaque in high-risk patients utilizing liquid chromatography-tandem mass spectrometry. *Rapid Commun Mass Spectrom.* 2024 Jul 30;38(14):e9763.

**Inhibitor · Natural Compounds · Compound Libraries · Recombinant Proteins**

This product is for Research Use Only · Not for Human or Veterinary or Therapeutic Use

Tel:781-999-4286 E\_mail:info@targetmol.com Address:34 Washington Street,Wellesley Hills,MA 02481