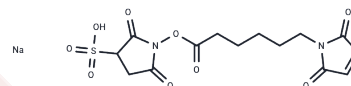


Sulfo-EMCS

Chemical Properties

CAS No. :	215312-86-0
Formula:	C ₁₄ H ₁₅ N ₂ NaO ₉ S
Molecular Weight:	410.33
Storage:	Keep away from direct sunlight Powder: -20°C for 3 years In solvent: -80°C for 1 year <small>Actual storage temperature shall be subject to the COA.</small>



Biological Description

Description	Sulfo-EMCS is a heterobifunctional sulfhydryl- and amine-reactive crosslinker.
Targets(IC50)	Others,PROTAC Linker

Solubility Information

Solubility	DMSO: Soluble, (< 1 mg/ml refers to the product slightly soluble or insoluble)
------------	---

Preparing Stock Solutions

	1mg	5mg	10mg
1 mM	2.4371 mL	12.1853 mL	24.3706 mL
5 mM	0.4874 mL	2.4371 mL	4.8741 mL
10 mM	0.2437 mL	1.2185 mL	2.4371 mL
50 mM	0.0487 mL	0.2437 mL	0.4874 mL

Please select the appropriate solvent to prepare the stock solution, according to the solubility of the product in different solvents. Please use it as soon as possible.

Note: The dilution table applies only to solid products. For liquid products, please calculate the stock solution based on the stated concentration and/or density.

Reference

Kitagawa, T., et al.:Chem. Pharm. Bull., 29, 1130 (1981)

Inhibitor · Natural Compounds · Compound Libraries · Recombinant Proteins

This product is for Research Use Only · Not for Human or Veterinary or Therapeutic Use

Tel:781-999-4286 E_mail:info@targetmol.com Address:34 Washington Street,Wellesley Hills,MA 02481