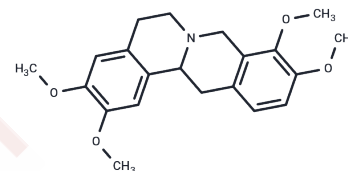


L-(R,S)-Tetrahydropalmatine

Chemical Properties

CAS No. :	10097-84-4
Formula:	C ₂₁ H ₂₅ NO ₄
Molecular Weight:	355.43
Storage:	Powder: -20°C for 3 years In solvent: -80°C for 1 year Actual storage temperature shall be subject to the COA.



Biological Description

Description	L-(R,S)-Tetrahydropalmatine (Rotundine) is extracted from <i>Corydalis yanhusuo</i> W. T. Wang.
Targets(IC50)	5-HT Receptor,Dopamine Receptor
In vitro	Rotundine displays a higher affinity to dopamine D1 than D2 receptor with K_i of 124 nM and 388 nM, respectively, while the IC ₅₀ values are 166 nM (D1) and 1.47 μ M (D2), respectively. Rotundine exhibits a weak inhibitory activity against dopamine D3 with IC ₅₀ of 3.25 μ M. Rotundine also potently inhibits 5-HT _{1A} with IC ₅₀ of 374 nM and K_i of 340 nM. In addition to the antagonism of postsynaptic dopamine receptors, inhibition of presynaptic autoreceptors by Rotundine leads to increased dopamine release, which is probably attributed to lower affinity of Rotundine for D2 receptors. Along with dopamine receptors, Rotundine can interact with a number of other receptor types, including α -1 adrenergic receptors, at which it functions as an antagonist, and γ -aminobutyric acid receptors, at which it facilitates γ -aminobutyric acid binding through positive allosteric effects. [1]

Solubility Information

Solubility	Ethanol: < 1 mg/mL (insoluble or slightly soluble), DMSO: 55 mg/mL (154.74 mM),Sonication is recommended. H ₂ O: < 1 mg/mL (insoluble or slightly soluble), (< 1 mg/ml refers to the product slightly soluble or insoluble)
------------	---

Preparing Stock Solutions

	1mg	5mg	10mg
1 mM	2.8135 mL	14.0675 mL	28.1349 mL
5 mM	0.5627 mL	2.8135 mL	5.627 mL
10 mM	0.2813 mL	1.4067 mL	2.8135 mL
50 mM	0.0563 mL	0.2813 mL	0.5627 mL

Please select the appropriate solvent to prepare the stock solution, according to the solubility of the product in different solvents. Please use it as soon as possible.

Note: The dilution table applies only to solid products. For liquid products, please calculate the stock solution based on the stated concentration and/or density.

Reference

- Wang JB, et al. *Future Med Chem*, 2012, 4(2), 177-186.
- Liu YL, et al. *Acta Pharmacol Sin*, 2005, 26(5), 533-538.
- Kou J, et al. *Biol Pharm Bull*, 2005, 28(1), 176-180.
- Xi ZX, et al. *Neuropharmacology*, 2007, 53(6), 771-782.
- Ma TW, et al. *Lett Drug Des Discov*, 2011, 8(5), 464-468.

Inhibitor · Natural Compounds · Compound Libraries · Recombinant Proteins

This product is for Research Use Only · Not for Human or Veterinary or Therapeutic Use

Tel:781-999-4286 E_mail:info@targetmol.com Address:34 Washington Street,Wellesley Hills,MA 02481