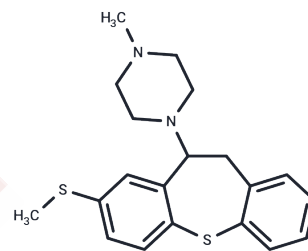


## Metitepine

## Chemical Properties

CAS No. :	20229-30-5
Formula:	C <sub>20</sub> H <sub>24</sub> N <sub>2</sub> S <sub>2</sub>
Molecular Weight:	356.55
Storage:	Powder: -20°C for 3 years   In solvent: -80°C for 1 year Actual storage temperature shall be subject to the COA.



## Biological Description

Description	Metitepine is a serotonin receptor antagonist in the CNS used as an antipsychotic.
Targets(IC50)	Others,5-HT Receptor

## Preparing Stock Solutions

	1mg	5mg	10mg
1 mM	2.8047 mL	14.0233 mL	28.0466 mL
5 mM	0.5609 mL	2.8047 mL	5.6093 mL
10 mM	0.2805 mL	1.4023 mL	2.8047 mL
50 mM	0.0561 mL	0.2805 mL	0.5609 mL

Please select the appropriate solvent to prepare the stock solution, according to the solubility of the product in different solvents. Please use it as soon as possible.

Note: The dilution table applies only to solid products. For liquid products, please calculate the stock solution based on the stated concentration and/or density.

Inhibitor · Natural Compounds · Compound Libraries · Recombinant Proteins

This product is for Research Use Only · Not for Human or Veterinary or Therapeutic Use

Tel:781-999-4286 E\_mail:info@targetmol.com Address:34 Washington Street,Wellesley Hills,MA 02481