

## sulfo-SPDB

## Chemical Properties

CAS No. : 1193111-39-5

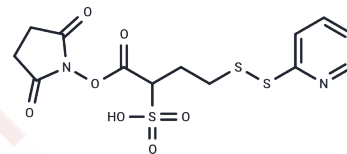
Formula: C<sub>13</sub>H<sub>14</sub>N<sub>2</sub>O<sub>7</sub>S<sub>3</sub>

Molecular Weight: 406.45

Keep away from direct sunlight

Storage: Powder: -20°C for 3 years | In solvent: -80°C for 1 year

Actual storage temperature shall be subject to the COA.



## Biological Description

Description	sulfo-SPDB is a cleavable linker vital in ADC synthesis. sulfo-SPDB joins cytotoxic drugs to antibodies, enabling precise delivery to cells or proteins. The cleavable nature ensures controlled drug release, optimizing ADC effectiveness.
Targets(IC50)	ADC Linker, PROTAC Linker
In vitro	Antibody-Drug Conjugates (ADCs) consist of an antibody linked to a cytotoxic agent via an ADC linker[1].

## Preparing Stock Solutions

	1mg	5mg	10mg
1 mM	2.4603 mL	12.3016 mL	24.6033 mL
5 mM	0.4921 mL	2.4603 mL	4.9207 mL
10 mM	0.246 mL	1.2302 mL	2.4603 mL
50 mM	0.0492 mL	0.246 mL	0.4921 mL

Please select the appropriate solvent to prepare the stock solution, according to the solubility of the product in different solvents. Please use it as soon as possible.

Note: The dilution table applies only to solid products. For liquid products, please calculate the stock solution based on the stated concentration and/or density.

## Reference

Beck A, et al. Strategies and challenges for the next generation of antibody-drug conjugates. Nat Rev Drug Discov. 2017 May;16(5):315-337.

**Inhibitor · Natural Compounds · Compound Libraries · Recombinant Proteins**

This product is for Research Use Only · Not for Human or Veterinary or Therapeutic Use

Tel:781-999-4286 E\_mail:info@targetmol.com Address:34 Washington Street,Wellesley Hills,MA 02481