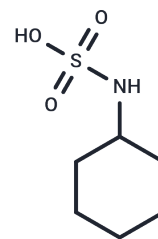


Cyclamic acid

Chemical Properties

CAS No. :	100-88-9
Formula:	C ₆ H ₁₃ NO ₃ S
Molecular Weight:	179.24
Storage:	Powder: -20°C for 3 years In solvent: -80°C for 1 year Actual storage temperature shall be subject to the COA.



Biological Description

Description	Cyclamic acid (NSC-220327) is an artificial sweetening agent, usually employed as Na or Ca salt (cyclamate). Use suspended in some countries, including USA, because of possible weak carcinogenic activity (disputed).
Targets(IC50)	Apoptosis,Others,Necroptosis
In vitro	Cyclamic acid in the form of its sodium or calcium salt is one of the most widely used artificial sweeteners in food and pharmaceuticals. Cyclamic acid is in use in more than 50 countries, especially in combination with other sweeteners, to eliminate aftertaste. However, the petition on Cyclamic acid, calcium and sodium cyclamate is being held in abeyance with the FDA in the USA (CFSAN - Office of Food Additive Safety, 2006).

Solubility Information

Solubility	DMSO: 55 mg/mL (306.85 mM),Sonication is recommended. Ethanol: 34 mg/mL (189.69 mM),Sonication is recommended. H2O: 33 mg/mL (184.11 mM),Sonication is recommended. (< 1 mg/ml refers to the product slightly soluble or insoluble)
In vivo Formulation	10% DMSO+40% PEG300+5% Tween 80+45% Saline: 2 mg/mL (11.16 mM),Sonication is recommended. <i>Please add the solvents sequentially, clarifying the solution as much as possible before adding the next one. Dissolve by heating and/or sonication if necessary. Working solution is recommended to be prepared and used immediately. The formulation provided above is for reference purposes only. In vivo formulations may vary and should be modified based on specific experimental conditions.</i>

Preparing Stock Solutions

	1mg	5mg	10mg
1 mM	5.5791 mL	27.8956 mL	55.7911 mL
5 mM	1.1158 mL	5.5791 mL	11.1582 mL
10 mM	0.5579 mL	2.7896 mL	5.5791 mL
50 mM	0.1116 mL	0.5579 mL	1.1158 mL

Please select the appropriate solvent to prepare the stock solution, according to the solubility of the product in different solvents. Please use it as soon as possible.

Note: The dilution table applies only to solid products. For liquid products, please calculate the stock solution based on the stated concentration and/or density.

Reference

Cutrín Prieto C, et al. Med Clin (Barc), 1991, 97(3), 104-106

Inhibitor · Natural Compounds · Compound Libraries · Recombinant Proteins

This product is for Research Use Only · Not for Human or Veterinary or Therapeutic Use

Tel:781-999-4286 E_mail:info@targetmol.com Address:34 Washington Street,Wellesley Hills,MA 02481