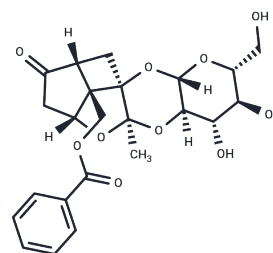


Lactiflorin

Chemical Properties

| | |
|-------------------|---|
| CAS No. : | 1361049-59-3 |
| Formula: | C ₂₃ H ₂₆ O ₁₀ |
| Molecular Weight: | 462.45 |
| Storage: | Powder: -20°C for 3 years In solvent: -80°C for 1 year Actual storage temperature shall be subject to the COA. |



Biological Description

| | |
|---------------|---|
| Description | Lactiflorin is a monoterpene glycoside from paeony root. Lactiflorin possesses nephroprotective effect. |
| Targets(IC50) | Others |

Solubility Information

| | |
|------------|---|
| Solubility | DMSO: 55 mg/mL (118.93 mM), Sonication is recommended. (< 1 mg/ml refers to the product slightly soluble or insoluble) |
|------------|---|

Preparing Stock Solutions

| | 1mg | 5mg | 10mg |
|-------|-----------|-----------|-----------|
| 1 mM | 2.1624 mL | 10.812 mL | 21.624 mL |
| 5 mM | 0.4325 mL | 2.1624 mL | 4.3248 mL |
| 10 mM | 0.2162 mL | 1.0812 mL | 2.1624 mL |
| 50 mM | 0.0432 mL | 0.2162 mL | 0.4325 mL |

Please select the appropriate solvent to prepare the stock solution, according to the solubility of the product in different solvents. Please use it as soon as possible.

Note: The dilution table applies only to solid products. For liquid products, please calculate the stock solution based on the stated concentration and/or density.

Reference

Lu P , P Bach. Total Synthesis of (+)-Lactiflorin by an Intramolecular [2+2] Photocycloaddition †[M]. 2011.

Inhibitor · Natural Compounds · Compound Libraries · Recombinant Proteins

This product is for Research Use Only · Not for Human or Veterinary or Therapeutic Use

Tel:781-999-4286 E_mail:info@targetmol.com Address:34 Washington Street,Wellesley Hills,MA 02481