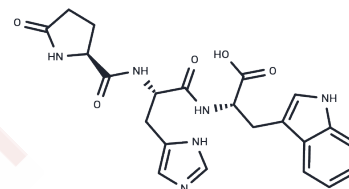


## Leuprolide (1-3)

## Chemical Properties

CAS No. :	35925-21-4
Formula:	C <sub>22</sub> H <sub>24</sub> N <sub>6</sub> O <sub>5</sub>
Molecular Weight:	452.46
Storage:	Powder: -20°C for 3 years   In solvent: -80°C for 1 year Actual storage temperature shall be subject to the COA.



## Biological Description

Description	Leuprolide (1-3) is a manufactured version of a hormone used to treat prostate cancer, breast cancer, endometriosis, uterine fibroids, and early puberty.
Targets(IC50)	Others

## Preparing Stock Solutions

	1mg	5mg	10mg
1 mM	2.2101 mL	11.0507 mL	22.1014 mL
5 mM	0.442 mL	2.2101 mL	4.4203 mL
10 mM	0.221 mL	1.1051 mL	2.2101 mL
50 mM	0.0442 mL	0.221 mL	0.442 mL

Please select the appropriate solvent to prepare the stock solution, according to the solubility of the product in different solvents. Please use it as soon as possible.

Note: The dilution table applies only to solid products. For liquid products, please calculate the stock solution based on the stated concentration and/or density.

## Reference

- Leuprolide Acetate. The American Society of Health-System Pharmacists. Archived from the original on 23 December 2016. Retrieved 8 December 2016.
- 19th WHO Model List of Essential Medicines (April 2015) (PDF). WHO. April 2015. Archived(PDF) from the original on May 13, 2015. Retrieved May 10, 2015.
- WHO Model List of Essential Medicines (19th List) (PDF). World Health Organization. April 2015. Archived (PDF) from the original on 13 December 2016. Retrieved 8 December 2016.
- British national formulary : BNF 69 (69 ed.). British Medical Association. 2015. p. 655. ISBN 9780857111562.

**Inhibitor · Natural Compounds · Compound Libraries · Recombinant Proteins**

This product is for Research Use Only · Not for Human or Veterinary or Therapeutic Use

Tel:781-999-4286 E\_mail:info@targetmol.com Address:34 Washington Street,Wellesley Hills,MA 02481