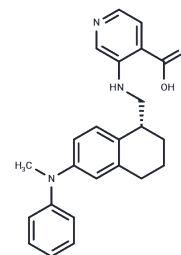


QC6352

Chemical Properties

CAS No. : 1851373-36-8
 Formula: C₂₄H₂₅N₃O₂
 Molecular Weight: 387.47
 Storage: Powder: -20°C for 3 years | In solvent: -80°C for 1 year
 Actual storage temperature shall be subject to the COA.



Biological Description

Description	QC6352 is a selective and effective KDM4C inhibitor (IC ₅₀ : 35 nM).
Targets(IC ₅₀)	Histone Demethylase
In vitro	QC6352 is an effective KDM4C inhibitor (IC ₅₀ : 35±8 nM). QC6352 blocks the proliferation and self-renewal of BCSCs. In a concentration-dependent manner QC6352 dramatically decreases the anchorage-independent sphere-forming capacity of BCSC1 and BCSC2. The protein levels of (Epidermal growth factor receptor) EGFR are reduced in both BCSC1 and BCSC2 upon treatment with QC6352 [1][2].
In vivo	QC6352 significantly inhibits tumor growth and final tumor weight in both BCSC1 and BCSC2 xenografts. The treatment is well tolerated, with no impact on mice body weight. Administration of the KDM4 inhibitor QC6352 effectively blocks BCSC xenograft tumor growth [2].

Solubility Information

Solubility	DMSO: 25 mg/mL (64.52 mM), Sonication is recommended. (< 1 mg/ml refers to the product slightly soluble or insoluble)
In vivo Formulation	10% DMSO+40% PEG300+5% Tween-80+45% Saline: 1.5 mg/mL (3.87 mM), Sonication is recommended. <i>Please add the solvents sequentially, clarifying the solution as much as possible before adding the next one. Dissolve by heating and/or sonication if necessary. Working solution is recommended to be prepared and used immediately. The formulation provided above is for reference purposes only. In vivo formulations may vary and should be modified based on specific experimental conditions.</i>

Preparing Stock Solutions

	1mg	5mg	10mg
1 mM	2.5808 mL	12.9042 mL	25.8084 mL
5 mM	0.5162 mL	2.5808 mL	5.1617 mL
10 mM	0.2581 mL	1.2904 mL	2.5808 mL
50 mM	0.0516 mL	0.2581 mL	0.5162 mL

Please select the appropriate solvent to prepare the stock solution, according to the solubility of the product in different solvents. Please use it as soon as possible.

Note: The dilution table applies only to solid products. For liquid products, please calculate the stock solution based on the stated concentration and/or density.

Reference

Chen YK, et al. Design of KDM4 Inhibitors with Antiproliferative Effects in Cancer Models. ACS Med Chem Lett. 2017 Jul 27;8(8):869-874.

Metzger E, et al. KDM4 inhibition targets breast cancer stem-like cells. Cancer Res. 2017 Sep 7. pii: canres.1754.

Inhibitor · Natural Compounds · Compound Libraries · Recombinant Proteins

This product is for Research Use Only · Not for Human or Veterinary or Therapeutic Use

Tel:781-999-4286 E_mail:info@targetmol.com Address:34 Washington Street,Wellesley Hills,MA 02481