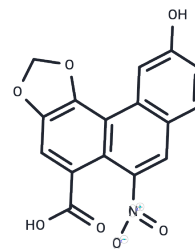


Aristolochic acid C

Chemical Properties

CAS No. :	4849-90-5
Formula:	C ₁₆ H ₉ NO ₇
Molecular Weight:	327.25
Storage:	Keep away from direct sunlight, Keep away from moisture Powder: -20°C for 3 years In solvent: -80°C for 1 year <small>Actual storage temperature shall be subject to the COA.</small>



Biological Description

Description	Aristolochic acid C, a derivative of Aristolochic acid, acts as a phospholipase A2 inhibitor.
Targets(IC50)	Others, Phospholipase

Solubility Information

Solubility	DMSO: 125 mg/mL (381.97 mM), Sonication is recommended. (< 1 mg/ml refers to the product slightly soluble or insoluble)
In vivo Formulation	10% DMSO+40% PEG300+5% Tween 80+45% Saline: 4 mg/mL (12.22 mM), Sonication is recommended. <i>Please add the solvents sequentially, clarifying the solution as much as possible before adding the next one. Dissolve by heating and/or sonication if necessary. Working solution is recommended to be prepared and used immediately. The formulation provided above is for reference purposes only. In vivo formulations may vary and should be modified based on specific experimental conditions.</i>

Preparing Stock Solutions

	1mg	5mg	10mg
1 mM	3.0558 mL	15.2788 mL	30.5577 mL
5 mM	0.6112 mL	3.0558 mL	6.1115 mL
10 mM	0.3056 mL	1.5279 mL	3.0558 mL
50 mM	0.0611 mL	0.3056 mL	0.6112 mL

Please select the appropriate solvent to prepare the stock solution, according to the solubility of the product in different solvents. Please use it as soon as possible.

Note: The dilution table applies only to solid products. For liquid products, please calculate the stock solution based on the stated concentration and/or density.

Reference

Gardiner J, et al. The phospholipase A2 inhibitor, aristolochic acid, disrupts cortical microtubule arrays and root growth in Arabidopsis. Plant Biol (Stuttg). 2008 Nov;10(6):725-31.

Inhibitor · Natural Compounds · Compound Libraries · Recombinant Proteins

This product is for Research Use Only · Not for Human or Veterinary or Therapeutic Use

Tel:781-999-4286 E_mail:info@targetmol.com Address:34 Washington Street,Wellesley Hills,MA 02481