

Rhodopsin Epitope Tag acetate

Chemical Properties

CAS No. :

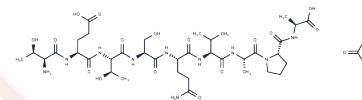
Formula: C39H66N10O18

Molecular Weight: 963.01

Keep away from moisture

Storage: Powder: -20°C for 3 years | In solvent: -80°C for 1 year

Actual storage temperature shall be subject to the COA.



Biological Description

Description	Rhodopsin Epitope Tag acetate is a 9-amino acid peptide representing C terminus of bovine rhodopsin widely used as an epitope tag. A number of anti-rhodopsin antibodies can recognize this epitope.
Targets(IC50)	Others
In vitro	Rhodopsin Epitope Tag is a 9-amino acid peptide localized within the C-terminal region of bovine rhodopsin . Rhodopsin Epitope Tag is widely used as an epitope tag and can be recognized by a number of anti-rhodopsin antibodies. The specificities of four monoclonal antibodies rho 1D4, 1C5, 3A6, and 3D6 prepared by immunization of rod outer segments containing rhodopsin have been defined using synthetic peptides. All of these antibodies interact within the 18 residues at the COOH terminus of rhodopsin and recognize linear antigenic determinants of 4-11 residues[1].

Solubility Information

Solubility	DMSO: 5 mM, Sonication is recommended. (< 1 mg/ml refers to the product slightly soluble or insoluble)
------------	---

Preparing Stock Solutions

	1mg	5mg	10mg
1 mM	1.0384 mL	5.1921 mL	10.3841 mL
5 mM	0.2077 mL	1.0384 mL	2.0768 mL
10 mM	0.1038 mL	0.5192 mL	1.0384 mL
50 mM	0.0208 mL	0.1038 mL	0.2077 mL

Please select the appropriate solvent to prepare the stock solution, according to the solubility of the product in different solvents. Please use it as soon as possible.

Note: The dilution table applies only to solid products. For liquid products, please calculate the stock solution based on the stated concentration and/or density.

Reference

Hodges RS, Heaton RJ, Parker JM, Molday L, Molday RS. Antigen-antibody interaction. Synthetic peptides define linear antigenic determinants recognized by monoclonal antibodies directed to the cytoplasmic carboxyl terminus of rhodopsin. *J Biol Chem.* 1988;263:11768-11775.

Inhibitor · Natural Compounds · Compound Libraries · Recombinant Proteins

This product is for Research Use Only · Not for Human or Veterinary or Therapeutic Use

Tel:781-999-4286 E_mail:info@targetmol.com Address:34 Washington Street,Wellesley Hills,MA 02481