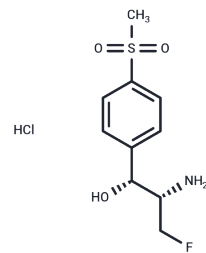


Florfenicol amine hydrochloride

Chemical Properties

| | |
|-------------------|---|
| CAS No. : | 108656-33-3 |
| Formula: | C ₁₀ H ₁₅ ClFNO ₃ S |
| Molecular Weight: | 283.75 |
| Storage: | Keep away from moisture, Store at low temperature Powder: -20°C for 3 years In solvent: -80°C for 1 year <i>Actual storage temperature shall be subject to the COA.</i> |



Biological Description

| | |
|---------------|--|
| Description | Florfenicol amine hydrochloride is a synthetic veterinary antibiotic with antimicrobial activity. Florfenicol amine hydrochloride is widely used in aquaculture and ranching for the study of diseases caused by Bartonella, Edwardsiella, Escherichia coli, and Salmonella. |
| Targets(IC50) | Antibacterial, Antibiotic, Drug Metabolite |

Solubility Information

| | |
|---------------------|--|
| Solubility | PBS (pH 7.2): 10 mg/mL (35.24 mM), Sonication is recommended. DMF: 10 mg/mL (35.24 mM), Sonication is recommended. Ethanol: 10 mg/mL (35.24 mM), Sonication is recommended. DMSO: 10 mg/mL (35.24 mM), Sonication is recommended. (< 1 mg/ml refers to the product slightly soluble or insoluble) |
| In vivo Formulation | PBS: 2 mg/mL (7.05 mM), Solution. 10% DMSO+40% PEG300+5% Tween 80+45% Saline: 2 mg/mL (7.05 mM), Sonication is recommended. <i>Please add the solvents sequentially, clarifying the solution as much as possible before adding the next one. Dissolve by heating and/or sonication if necessary. Working solution is recommended to be prepared and used immediately. The formulation provided above is for reference purposes only. In vivo formulations may vary and should be modified based on specific experimental conditions.</i> |

Preparing Stock Solutions

| | 1mg | 5mg | 10mg |
|-------|-----------|------------|------------|
| 1 mM | 3.5242 mL | 17.6211 mL | 35.2423 mL |
| 5 mM | 0.7048 mL | 3.5242 mL | 7.0485 mL |
| 10 mM | 0.3524 mL | 1.7621 mL | 3.5242 mL |
| 50 mM | 0.0705 mL | 0.3524 mL | 0.7048 mL |

Please select the appropriate solvent to prepare the stock solution, according to the solubility of the product in different solvents. Please use it as soon as possible.

Note: The dilution table applies only to solid products. For liquid products, please calculate the stock solution based on the stated concentration and/or density.

Reference

B-K Park, et al. Pharmacokinetics of florfenicol and its metabolite, florfenicol amine, in the Korean catfish (*Silurus asotus*). *J Vet Pharmacol Ther.* 2006 Feb;29(1):37-40.

Anadón A, et al. Plasma and tissue depletion of florfenicol and florfenicol-amine in chickens. *J Agric Food Chem.* 2008 Nov 26;56(22):11049-56.

Inhibitor · Natural Compounds · Compound Libraries · Recombinant Proteins

This product is for Research Use Only · Not for Human or Veterinary or Therapeutic Use

Tel:781-999-4286 E_mail:info@targetmol.com Address:34 Washington Street,Wellesley Hills,MA 02481