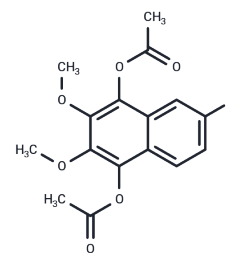


## Lonapalene

## Chemical Properties

CAS No. :	91431-42-4
Formula:	C <sub>16</sub> H <sub>15</sub> ClO <sub>6</sub>
Molecular Weight:	338.74
Storage:	Powder: -20°C for 3 years   In solvent: -80°C for 1 year Actual storage temperature shall be subject to the COA.



## Biological Description

Description	Lonapalene (RS4317) is a 5-lipoxygenase (5-LO) inhibitor with anti-psoriasis efficacy. Lonapalene topically blocks skin inflammation.
Targets(IC50)	Lipoxygenase
In vitro	Clonaparine (RS4317) is used to treat psoriasis, and leukotriene B4-related mediators [1].

## Solubility Information

Solubility	DMSO: 80 mg/mL (236.17 mM), Sonication is recommended. (< 1 mg/ml refers to the product slightly soluble or insoluble)
In vivo Formulation	10% DMSO+40% PEG300+5% Tween 80+45% Saline: 3.3 mg/mL (9.74 mM), Sonication is recommended. <i>Please add the solvents sequentially, clarifying the solution as much as possible before adding the next one. Dissolve by heating and/or sonication if necessary. Working solution is recommended to be prepared and used immediately. The formulation provided above is for reference purposes only. In vivo formulations may vary and should be modified based on specific experimental conditions.</i>

### Preparing Stock Solutions

---

	1mg	5mg	10mg
1 mM	2.9521 mL	14.7606 mL	29.5212 mL
5 mM	0.5904 mL	2.9521 mL	5.9042 mL
10 mM	0.2952 mL	1.4761 mL	2.9521 mL
50 mM	0.059 mL	0.2952 mL	0.5904 mL

---

Please select the appropriate solvent to prepare the stock solution, according to the solubility of the product in different solvents. Please use it as soon as possible.

Note: The dilution table applies only to solid products. For liquid products, please calculate the stock solution based on the stated concentration and/or density.

### Reference

Black AK, et al. Pharmacologic and clinical effects of lonapalene (RS 43179), a 5-lipoxygenase inhibitor, in psoriasis. *J Invest Dermatol.* 1990 Jul;95(1):50-4.

**Inhibitor · Natural Compounds · Compound Libraries · Recombinant Proteins**

This product is for Research Use Only · Not for Human or Veterinary or Therapeutic Use

Tel:781-999-4286 E\_mail:info@targetmol.com Address:34 Washington Street,Wellesley Hills,MA 02481