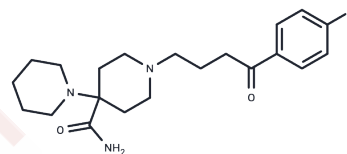


Pipamperone

Chemical Properties

| | |
|-------------------|---|
| CAS No. : | 1893-33-0 |
| Formula: | C ₂₁ H ₃₀ N ₃ O ₂ |
| Molecular Weight: | 375.48 |
| Storage: | Powder: -20°C for 3 years In solvent: -80°C for 1 year Actual storage temperature shall be subject to the COA. |



Biological Description

| | |
|---------------|---|
| Description | Pipamperone (McN-JR 3345) binds 5-HT _{2A} closely as receptor. |
| Targets(IC50) | 5-HT Receptor, Dopamine Receptor |

Solubility Information

| | |
|---------------------|--|
| Solubility | 0.1 M HCl: 25 mg/mL (66.58 mM), Sonication is recommended. DMSO: 100 mg/mL (266.33 mM), Sonication is recommended. (< 1 mg/ml refers to the product slightly soluble or insoluble) |
| In vivo Formulation | 10% DMSO+40% PEG300+5% Tween 80+45% Saline: 4 mg/mL (10.65 mM), Sonication is recommended. <i>Please add the solvents sequentially, clarifying the solution as much as possible before adding the next one. Dissolve by heating and/or sonication if necessary. Working solution is recommended to be prepared and used immediately. The formulation provided above is for reference purposes only. In vivo formulations may vary and should be modified based on specific experimental conditions.</i> |

Preparing Stock Solutions

| | 1mg | 5mg | 10mg |
|-------|-----------|------------|------------|
| 1 mM | 2.6633 mL | 13.3163 mL | 26.6326 mL |
| 5 mM | 0.5327 mL | 2.6633 mL | 5.3265 mL |
| 10 mM | 0.2663 mL | 1.3316 mL | 2.6633 mL |
| 50 mM | 0.0533 mL | 0.2663 mL | 0.5327 mL |

Please select the appropriate solvent to prepare the stock solution, according to the solubility of the product in different solvents. Please use it as soon as possible.

Note: The dilution table applies only to solid products. For liquid products, please calculate the stock solution based on the stated concentration and/or density.

Reference

Erik Buntinx, MD, et al. Selective Serotonergic Properties of Low-Dose Pipamperone May Enhance Antidepressant Effect: Preclinical Evidence.

Inhibitor · Natural Compounds · Compound Libraries · Recombinant Proteins

This product is for Research Use Only · Not for Human or Veterinary or Therapeutic Use

Tel: 781-999-4286 E_mail: info@targetmol.com Address: 34 Washington Street, Wellesley Hills, MA 02481