

C.I. 15710

Chemical Properties

CAS No. : 3618-58-4

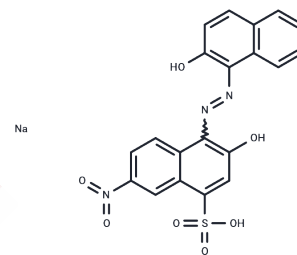
Formula: C₂₀H₁₃N₃NaO₇S

Molecular Weight: 462.39

Keep away from direct sunlight

Storage: Powder: -20°C for 3 years | In solvent: -80°C for 1 year

Actual storage temperature shall be subject to the COA.



Biological Description

Description	C.I. 15710 is a dye that is a red to dark blue to black powder. It is widely used for coloring the blanks and glazes of ceramics, as well as for dipping and coloring cement concrete, and for dyeing woolen strips, woolen threads and other woolen fabrics.
Targets(IC50)	Others

Solubility Information

Solubility	DMSO: Soluble, (< 1 mg/ml refers to the product slightly soluble or insoluble)
------------	---

Preparing Stock Solutions

	1mg	5mg	10mg
1 mM	2.1627 mL	10.8134 mL	21.6268 mL
5 mM	0.4325 mL	2.1627 mL	4.3254 mL
10 mM	0.2163 mL	1.0813 mL	2.1627 mL
50 mM	0.0433 mL	0.2163 mL	0.4325 mL

Please select the appropriate solvent to prepare the stock solution, according to the solubility of the product in different solvents. Please use it as soon as possible.

Note: The dilution table applies only to solid products. For liquid products, please calculate the stock solution based on the stated concentration and/or density.

Inhibitor · Natural Compounds · Compound Libraries · Recombinant Proteins

This product is for Research Use Only · Not for Human or Veterinary or Therapeutic Use

Tel: 781-999-4286

E_mail: info@targetmol.com

Address: 34 Washington Street, Wellesley Hills, MA 02481