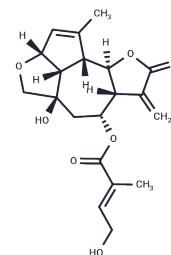


## Eupalinilide C

## Chemical Properties

CAS No. :	757202-11-2
Formula:	C <sub>20</sub> H <sub>24</sub> O <sub>7</sub>
Molecular Weight:	376.405
Storage:	Powder: -20°C for 3 years   In solvent: -80°C for 1 year Actual storage temperature shall be subject to the COA.



## Biological Description

Description	Eupalinilide C is a natural product from <i>Impatiens balsamina</i> L.
Targets(IC50)	Others
In vitro	Ten new guaiane type sesquiterpene lactones, namely, eupalinilides A-J (1-10), as well as nine known compounds, eupachinilide C (11), eupachifolin D (12), eupachinilide E (13), 2 $\alpha$ -hydroxyeupatolide (14), 3-deacetyeupalinin A (15), heliangine (16), 8 $\beta$ -tigloyloxy-2,3-seco-6 $\beta$ H,7 $\alpha$ H-helianga-4Z,11(13)-diene-3,10 $\beta$ ;6, 12-diolid-2-oic acid (17), 8 $\beta$ -(4'-hydroxytigloyloxy)-3 $\beta$ ,14-dihydroxy-6 $\beta$ H,7 $\alpha$ H-germacra-1(10)Z,4Z,11(13)-trien-6,12-olide (18), and 8 $\beta$ -tigloyloxy-3 $\beta$ ,14-dihydroxy-6 $\beta$ H,7 $\alpha$ H-germacra-1(10)Z,4E,11(13)-trien-6,12-olide (19), were isolated from the whole plant of <i>Eupatorium lindleyanum</i> . Eupalinilide B (2), Eupalinilide C (3), Eupalinilide E (5), Eupalinilide F (6), and Eupalinilide I (9) have been tested for cytotoxicity against P-388 and A-549 tumor cell lines.

## Preparing Stock Solutions

	1mg	5mg	10mg
1 mM	2.6567 mL	13.2834 mL	26.5668 mL
5 mM	0.5313 mL	2.6567 mL	5.3134 mL
10 mM	0.2657 mL	1.3283 mL	2.6567 mL
50 mM	0.0531 mL	0.2657 mL	0.5313 mL

Please select the appropriate solvent to prepare the stock solution, according to the solubility of the product in different solvents. Please use it as soon as possible.

Note: The dilution table applies only to solid products. For liquid products, please calculate the stock solution based on the stated concentration and/or density.

Reference

Cytotoxic sesquiterpene lactones from Eupatorium lindleyanum. J Nat Prod. 2004 Sep;67(9):1470-5.

**Inhibitor · Natural Compounds · Compound Libraries · Recombinant Proteins**

This product is for Research Use Only · Not for Human or Veterinary or Therapeutic Use

Tel: 781-999-4286 E\_mail: info@targetmol.com Address: 34 Washington Street, Wellesley Hills, MA 02481