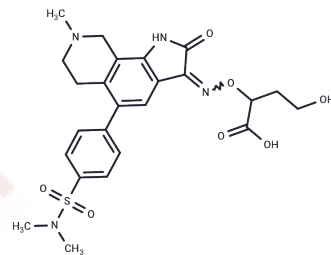


SPD 502

Chemical Properties

CAS No. : 254751-28-5
 Formula: C₂₄H₂₈N₄O₇S
 Molecular Weight: 516.57
 Storage: Powder: -20°C for 3 years | In solvent: -80°C for 1 year
 Actual storage temperature shall be subject to the COA.



Biological Description

Description	SPD 502 is a potential selective AMPA antagonist for epilepsy.
Targets(IC50)	Others

Preparing Stock Solutions

	1mg	5mg	10mg
1 mM	1.9358 mL	9.6792 mL	19.3585 mL
5 mM	0.3872 mL	1.9358 mL	3.8717 mL
10 mM	0.1936 mL	0.9679 mL	1.9358 mL
50 mM	0.0387 mL	0.1936 mL	0.3872 mL

Please select the appropriate solvent to prepare the stock solution, according to the solubility of the product in different solvents. Please use it as soon as possible.

Note: The dilution table applies only to solid products. For liquid products, please calculate the stock solution based on the stated concentration and/or density.

Inhibitor · Natural Compounds · Compound Libraries · Recombinant Proteins

This product is for Research Use Only · Not for Human or Veterinary or Therapeutic Use

Tel: 781-999-4286 E_mail: info@targetmol.com Address: 34 Washington Street, Wellesley Hills, MA 02481