

Brr2-IN-3

## Chemical Properties

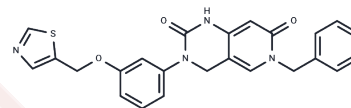
CAS No. : 2104030-82-0

Formula: C<sub>24</sub>H<sub>20</sub>N<sub>4</sub>O<sub>3</sub>S

Molecular Weight: 444.51

Storage: Powder: -20°C for 3 years | In solvent: -80°C for 1 year

Actual storage temperature shall be subject to the COA.



## Biological Description

Description	Brr2-IN-3 (Brr2 Inhibitor C9) is an allosteric inhibitor of the spliceosomal RNA helicase Brr2. Brr2 is implicated in autosomal-dominant retinitis pigmentosa (a group of progressive retinal degenerative disorders).
Targets(IC50)	Others,DNA/RNA Synthesis

## Solubility Information

Solubility	DMSO: 27.5 mg/mL (61.87 mM),Sonication is recommended. (< 1 mg/ml refers to the product slightly soluble or insoluble)
In vivo Formulation	10% DMSO+40% PEG300+5% Tween 80+45% Saline: 2 mg/mL (4.5 mM),Sonication is recommended. <i>Please add the solvents sequentially, clarifying the solution as much as possible before adding the next one. Dissolve by heating and/or sonication if necessary. Working solution is recommended to be prepared and used immediately. The formulation provided above is for reference purposes only. In vivo formulations may vary and should be modified based on specific experimental conditions.</i>

## Preparing Stock Solutions

	1mg	5mg	10mg
1 mM	2.2497 mL	11.2483 mL	22.4967 mL
5 mM	0.4499 mL	2.2497 mL	4.4993 mL
10 mM	0.225 mL	1.1248 mL	2.2497 mL
50 mM	0.045 mL	0.225 mL	0.4499 mL

Please select the appropriate solvent to prepare the stock solution, according to the solubility of the product in different solvents. Please use it as soon as possible.

Note: The dilution table applies only to solid products. For liquid products, please calculate the stock solution based on the stated concentration and/or density.

**Inhibitor · Natural Compounds · Compound Libraries · Recombinant Proteins**

This product is for Research Use Only · Not for Human or Veterinary or Therapeutic Use

Tel:781-999-4286 E\_mail:info@targetmol.com Address:34 Washington Street,Wellesley Hills,MA 02481