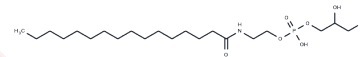


Glycerophospho-N-Palmitoyl Ethanolamine

Chemical Properties

CAS No. :	100575-09-5
Formula:	C ₂₁ H ₄₄ N ₀ O ₇ P
Molecular Weight:	453.557
Storage:	Powder: -20°C for 3 years In solvent: -80°C for 1 year Actual storage temperature shall be subject to the COA.



Biological Description

Description	N-Acylated ethanolamines (NAE) are naturally-occurring lipids that have diverse bioactivities. For example, arachidonoyl ethanolamide (AEA) is an endogenous neurotransmitter that evokes cellular responses by activating the cannabinoid receptors, central cannabinoid (CB1) and peripheral cannabinoid (CB2). The different types of NAE are derived from glycerophospho-linked precursors by the activity of glycerophosphodiesterase 1 (GDE1). Glycerophospho-N-palmitoyl ethanolamine (GP-NPEA) is the metabolic precursor of palmitoyl ethanolamide (PEA). PEA is an endogenous cannabinoid found in brain, liver, and other mammalian tissues, that has potent anti-inflammatory activity in vivo. PEA has low affinity for peripheral cannabinoid (CB2) and no appreciable affinity for central cannabinoid (CB1), suggesting that its efficacy is through a different receptor.
Targets(IC50)	Others,Endogenous Metabolite

Solubility Information

Solubility	PBS (pH 7.2): 5 mg/mL (11.02 mM),Sonication is recommended. (< 1 mg/ml refers to the product slightly soluble or insoluble)
------------	--

Preparing Stock Solutions

	1mg	5mg	10mg
1 mM	2.2048 mL	11.0239 mL	22.0478 mL
5 mM	0.441 mL	2.2048 mL	4.4096 mL
10 mM	0.2205 mL	1.1024 mL	2.2048 mL
50 mM	0.0441 mL	0.2205 mL	0.441 mL

Please select the appropriate solvent to prepare the stock solution, according to the solubility of the product in different solvents. Please use it as soon as possible.

Note: The dilution table applies only to solid products. For liquid products, please calculate the stock solution based on the stated concentration and/or density.

Inhibitor · Natural Compounds · Compound Libraries · Recombinant Proteins

This product is for Research Use Only · Not for Human or Veterinary or Therapeutic Use

Tel: 781-999-4286 E_mail: info@targetmol.com Address: 34 Washington Street, Wellesley Hills, MA 02481