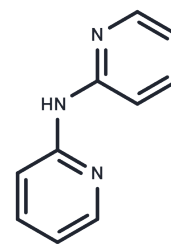


Di(pyridin-2-yl)amine

Chemical Properties

CAS No. :	1202-34-2
Formula:	C10H9N3
Molecular Weight:	171.2
Storage:	Powder: -20°C for 3 years In solvent: -80°C for 1 year Actual storage temperature shall be subject to the COA.



Biological Description

Description	Di(pyridin-2-yl)amine is a pyridine derivative widely used in biochemical experiments and drug synthesis research.
Targets(IC50)	Others

Preparing Stock Solutions

	1mg	5mg	10mg
1 mM	5.8411 mL	29.2056 mL	58.4112 mL
5 mM	1.1682 mL	5.8411 mL	11.6822 mL
10 mM	0.5841 mL	2.9206 mL	5.8411 mL
50 mM	0.1168 mL	0.5841 mL	1.1682 mL

Please select the appropriate solvent to prepare the stock solution, according to the solubility of the product in different solvents. Please use it as soon as possible.

Note: The dilution table applies only to solid products. For liquid products, please calculate the stock solution based on the stated concentration and/or density.

Reference

Zhang HZ, et al. Uptake of organic gas phase species by 1-methylnaphthalene. J Phys Chem A. 2005 May 5;109 (17):3941-9.

Inhibitor · Natural Compounds · Compound Libraries · Recombinant Proteins

This product is for Research Use Only · Not for Human or Veterinary or Therapeutic Use

Tel:781-999-4286 E_mail:info@targetmol.com Address:34 Washington Street,Wellesley Hills,MA 02481