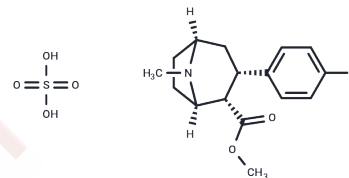


BETA-CFT sulfate

Chemical Properties

CAS No. :	2068138-14-5
Formula:	C16H22FNO6S
Molecular Weight:	375.4
Storage:	Powder: -20°C for 3 years In solvent: -80°C for 1 year Actual storage temperature shall be subject to the COA.



Biological Description

Description	BETA-CFT sulfate is a derivative of BETA-CFT, an antagonist of dopamine transporter proteins (DATs).
Targets(IC50)	Others

Solubility Information

Solubility	DMSO: 10 mg/mL (26.64 mM), Sonication is recommended. (< 1 mg/ml refers to the product slightly soluble or insoluble)
------------	--

Preparing Stock Solutions

	1mg	5mg	10mg
1 mM	2.6638 mL	13.3191 mL	26.6383 mL
5 mM	0.5328 mL	2.6638 mL	5.3277 mL
10 mM	0.2664 mL	1.3319 mL	2.6638 mL
50 mM	0.0533 mL	0.2664 mL	0.5328 mL

Please select the appropriate solvent to prepare the stock solution, according to the solubility of the product in different solvents. Please use it as soon as possible.

Note: The dilution table applies only to solid products. For liquid products, please calculate the stock solution based on the stated concentration and/or density.

Inhibitor · Natural Compounds · Compound Libraries · Recombinant Proteins

This product is for Research Use Only · Not for Human or Veterinary or Therapeutic Use

Tel: 781-999-4286 E_mail: info@targetmol.com Address: 34 Washington Street, Wellesley Hills, MA 02481