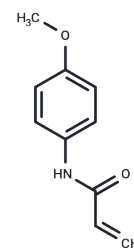


N-(4-methoxyphenyl)prop-2-enamide

Chemical Properties

CAS No. :	7766-37-2
Formula:	C ₁₀ H ₁₁ NO ₂
Molecular Weight:	177.2
Storage:	Powder: -20°C for 3 years In solvent: -80°C for 1 year Actual storage temperature shall be subject to the COA.



Biological Description

Description	N-(4-methoxyphenyl)prop-2-enamide (N-(4-Methoxyphenyl)acrylamide) is an acrylamide analog used as a molecular structural unit. It inhibits the enzyme acetylcholinesterase, increasing acetylcholine levels in the synaptic gap. It can also inhibit the breakdown of dopamine, leading to increased dopamine levels in the brain.
Targets(IC50)	Others

Solubility Information

Solubility	DMSO: 55 mg/mL (310.38 mM), Sonication is recommended. (< 1 mg/ml refers to the product slightly soluble or insoluble)
------------	---

Preparing Stock Solutions

	1mg	5mg	10mg
1 mM	5.6433 mL	28.2167 mL	56.4334 mL
5 mM	1.1287 mL	5.6433 mL	11.2867 mL
10 mM	0.5643 mL	2.8217 mL	5.6433 mL
50 mM	0.1129 mL	0.5643 mL	1.1287 mL

Please select the appropriate solvent to prepare the stock solution, according to the solubility of the product in different solvents. Please use it as soon as possible.

Note: The dilution table applies only to solid products. For liquid products, please calculate the stock solution based on the stated concentration and/or density.

Inhibitor · Natural Compounds · Compound Libraries · Recombinant Proteins

This product is for Research Use Only · Not for Human or Veterinary or Therapeutic Use

Tel: 781-999-4286 E_mail: info@targetmol.com Address: 34 Washington Street, Wellesley Hills, MA 02481