

## Cyclo(Pro-Leu)

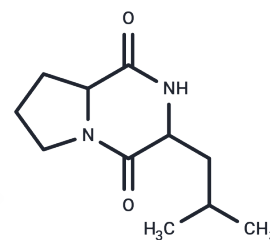
### Chemical Properties

CAS No. : 5654-86-4

Formula: C<sub>11</sub>H<sub>18</sub>N<sub>2</sub>O<sub>2</sub>

Molecular Weight: 210.27

Storage: Store at low temperature, Keep away from direct sunlight, Keep away from moisture  
 Powder: -20°C for 3 years | In solvent: -80°C for 1 year  
*Actual storage temperature shall be subject to the COA.*



### Biological Description

Description	Cyclo(Pro-Leu) (Cyclo-L-prolyl-L-leucine) is a marine-derived natural product with brine shrimp lethality.
Targets(IC50)	Others, Endogenous Metabolite

### Solubility Information

Solubility	H <sub>2</sub> O: 5 mg/mL (23.78 mM), Sonication is recommended. DMSO: 25 mg/mL (118.89 mM), Sonication is recommended. (< 1 mg/ml refers to the product slightly soluble or insoluble)
------------	---

### Preparing Stock Solutions

	1mg	5mg	10mg
1 mM	4.7558 mL	23.779 mL	47.5579 mL
5 mM	0.9512 mL	4.7558 mL	9.5116 mL
10 mM	0.4756 mL	2.3779 mL	4.7558 mL
50 mM	0.0951 mL	0.4756 mL	0.9512 mL

Please select the appropriate solvent to prepare the stock solution, according to the solubility of the product in different solvents. Please use it as soon as possible.

Note: The dilution table applies only to solid products. For liquid products, please calculate the stock solution based on the stated concentration and/or density.

### Reference

Mohammadi R, et al. Potential application of postbiotics metabolites from bioprotective culture to fabricate bacterial nanocellulose based antimicrobial packaging material. Int J Biol Macromol. 2022 Nov 1;220:528-536.

**Inhibitor · Natural Compounds · Compound Libraries · Recombinant Proteins**

This product is for Research Use Only · Not for Human or Veterinary or Therapeutic Use

Tel:781-999-4286 E\_mail:info@targetmol.com Address:34 Washington Street,Wellesley Hills,MA 02481