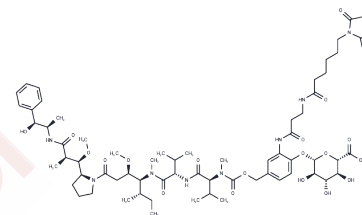


MC-betaglucuronide-MMAE-1

Chemical Properties

CAS No. :	1703778-92-0
Formula:	C66H98N8O20
Molecular Weight:	1323.546
Storage:	Powder: -20°C for 3 years Actual storage temperature shall be subject to the COA.



Biological Description

Description	MC-betaglucuronide-MMAE-1 is a potent antitumor drug-linker conjugate for antibody-drug conjugates (ADCs), utilizing MMAE (a tubulin polymerization inhibitor) connected via the cleavable ADC linker MC-betaglucuronide.
Targets(IC50)	Drug-Linker Conjugates for ADC

Preparing Stock Solutions

	1mg	5mg	10mg
1 mM	0.7555 mL	3.7777 mL	7.5554 mL
5 mM	0.1511 mL	0.7555 mL	1.5111 mL
10 mM	0.0756 mL	0.3778 mL	0.7555 mL
50 mM	0.0151 mL	0.0756 mL	0.1511 mL

Please select the appropriate solvent to prepare the stock solution, according to the solubility of the product in different solvents. Please use it as soon as possible.

Note: The dilution table applies only to solid products. For liquid products, please calculate the stock solution based on the stated concentration and/or density.

Reference

Okeley, et al. Intracellular Activation of SGN-35, a Potent Anti-CD30 Antibody-Drug Conjugate. *Clinical Cancer Research* (2010), 16(3), 888-897.

Inhibitor · Natural Compounds · Compound Libraries · Recombinant Proteins

This product is for Research Use Only · Not for Human or Veterinary or Therapeutic Use

Tel: 781-999-4286 E_mail: info@targetmol.com Address: 34 Washington Street, Wellesley Hills, MA 02481