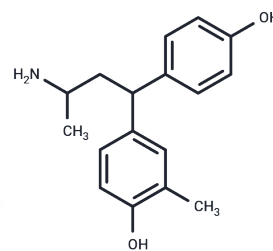


L 1935

## Chemical Properties

CAS No. : 13957-35-2  
 Formula: C<sub>17</sub>H<sub>21</sub>NO<sub>2</sub>  
 Molecular Weight: 271.35  
 Storage: Powder: -20°C for 3 years | In solvent: -80°C for 1 year  
 Actual storage temperature shall be subject to the COA.



## Biological Description

Description	L 1935 is a type of powerful histamine-liberator.
Targets(IC50)	Others

## Preparing Stock Solutions

	1mg	5mg	10mg
1 mM	3.6853 mL	18.4264 mL	36.8528 mL
5 mM	0.7371 mL	3.6853 mL	7.3706 mL
10 mM	0.3685 mL	1.8426 mL	3.6853 mL
50 mM	0.0737 mL	0.3685 mL	0.7371 mL

Please select the appropriate solvent to prepare the stock solution, according to the solubility of the product in different solvents. Please use it as soon as possible.

Note: The dilution table applies only to solid products. For liquid products, please calculate the stock solution based on the stated concentration and/or density.

## Reference

Kumar GC, Bhuvana K, Venkatarathnamma PN, Sarala N. Serum creatine phosphokinase as predictor of intermediate syndrome in organophosphorus poisoning. Indian J Crit Care Med. 2015 Jul;19(7):384-7. doi: 10.4103/0972-5229.160274. PubMed PMID: 26180430; PubMed Central PMCID: PMC4502490.

Gill SJ, Robert CH, Coletta M, Di Cera E, Brunori M. Cooperative free energies for nested allosteric models as applied to human hemoglobin. Biophys J. 1986 Oct;50(4):747-52. PubMed PMID: 3779009; PubMed Central PMCID: PMC1329852.

Lecomte J. [Respective role of endogenous histamine and 5-hydroxytryptamine in vascular collapse induced in rats by L 1935]. C R Seances Soc Biol Fil. 1966;160(6):1343-6. French. PubMed PMID: 4381696.

RADERMECKER M. [THE INFLUENCE OF AN INHIBITOR OF HISTIDINE DECARBOXYLASE ON HISTAMINE LIBERATION PRODUCED IN MAN BY THE INTRADERMAL INJECTION OF L 1935 AND THE LOCAL ANAPHYLACTIC REACTION]. Acta Allergol. 1965;20:77-83. French. PubMed PMID: 14311532.

**Inhibitor · Natural Compounds · Compound Libraries · Recombinant Proteins**

This product is for Research Use Only · Not for Human or Veterinary or Therapeutic Use

Tel:781-999-4286 E\_mail:info@targetmol.com Address:34 Washington Street,Wellesley Hills,MA 02481