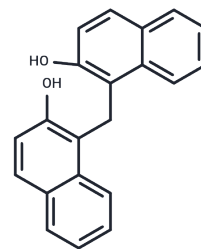


1,1'-Methylenedi-2-naphthol

Chemical Properties

| | |
|-------------------|---|
| CAS No. : | 1096-84-0 |
| Formula: | C ₂₁ H ₁₆ O ₂ |
| Molecular Weight: | 300.35 |
| Storage: | Powder: -20°C for 3 years In solvent: -80°C for 1 year Actual storage temperature shall be subject to the COA. |



Biological Description

| | |
|---------------|--|
| Description | 1,1'-Methylenedi-2-naphthol target CYP2C19 - cytochrome P450 family 2 subfamily C member 19 (human). |
| Targets(IC50) | Beta Amyloid,Others |

Solubility Information

| | |
|------------|--|
| Solubility | DMSO: 60 mg/mL (199.77 mM),Sonication is recommended. (< 1 mg/ml refers to the product slightly soluble or insoluble) |
|------------|--|

Preparing Stock Solutions

| | 1mg | 5mg | 10mg |
|-------|-----------|------------|------------|
| 1 mM | 3.3294 mL | 16.6472 mL | 33.2945 mL |
| 5 mM | 0.6659 mL | 3.3294 mL | 6.6589 mL |
| 10 mM | 0.3329 mL | 1.6647 mL | 3.3294 mL |
| 50 mM | 0.0666 mL | 0.3329 mL | 0.6659 mL |

Please select the appropriate solvent to prepare the stock solution, according to the solubility of the product in different solvents. Please use it as soon as possible.

Note: The dilution table applies only to solid products. For liquid products, please calculate the stock solution based on the stated concentration and/or density.

Reference

Bauer M , Langer O , Dalbianco P , et al. A positron emission tomography microdosing study with a potential anti-amyloid drug in healthy volunteers and patients with Alzheimer's disease.[J]. Clinical Pharmacology & Therapeutics, 2006, 80(3):216-227.

Inhibitor · Natural Compounds · Compound Libraries · Recombinant Proteins

This product is for Research Use Only · Not for Human or Veterinary or Therapeutic Use

Tel:781-999-4286 E_mail:info@targetmol.com Address:34 Washington Street,Wellesley Hills,MA 02481