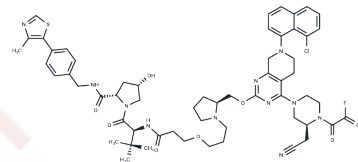


## LC 2 Epimer

## Chemical Properties

CAS No. :	2502156-12-7
Formula:	C59H71ClFN11O7S
Molecular Weight:	1132.8
Storage:	Keep away from direct sunlight Powder: -20°C for 3 years   In solvent: -80°C for 1 year <small>Actual storage temperature shall be subject to the COA.</small>



## Biological Description

Description	Negative control for LC 2.
Targets(IC50)	Others,PROTACs,Ras

## Preparing Stock Solutions

	1mg	5mg	10mg
1 mM	0.8828 mL	4.4138 mL	8.8277 mL
5 mM	0.1766 mL	0.8828 mL	1.7655 mL
10 mM	0.0883 mL	0.4414 mL	0.8828 mL
50 mM	0.0177 mL	0.0883 mL	0.1766 mL

Please select the appropriate solvent to prepare the stock solution, according to the solubility of the product in different solvents. Please use it as soon as possible.

Note: The dilution table applies only to solid products. For liquid products, please calculate the stock solution based on the stated concentration and/or density.

## Reference

De Vita et al (2020) The missing link between (un)druggable and degradable KRAS. ACS Cent.Sci. 6 1281 PMID: 32875070

Bond et al (2020) Targeted degradation of oncogenic KRAS G12C by VHL-recruiting PROTACs. ACS Cent.Sci. 6 1367 PMID: 32875077

**Inhibitor · Natural Compounds · Compound Libraries · Recombinant Proteins**

**This product is for Research Use Only · Not for Human or Veterinary or Therapeutic Use**

Tel:781-999-4286 E\_mail:info@targetmol.com Address:34 Washington Street,Wellesley Hills,MA 02481