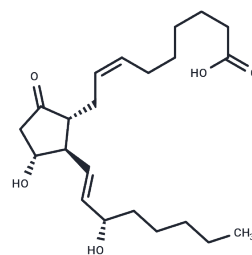


1a,1b-dihomo Prostaglandin E2

Chemical Properties

CAS No. :	26198-80-1
Formula:	C22H36O5
Molecular Weight:	380.52
Storage:	Powder: -20°C for 3 years In solvent: -80°C for 1 year Actual storage temperature shall be subject to the COA.



Biological Description

Description	1a,1b-dihomo Prostaglandin E2 (PGE2) is a rare polyunsaturated fatty acid initially identified in sheep vesicular gland microsomal extracts containing COX and incubated with arachidonic acid. It has also been detected in conditioned media of RAW 264.7 macrophages stimulated with endotoxin and arachidonic acid. This compound is believed to be produced by the elongation of AA to arachidonic acid, followed by sequential metabolism by COX and PGE synthase.
Targets(IC50)	Others, COX

Solubility Information

Solubility	DMSO: 100 mg/mL (262.8 mM), Sonication is recommended. Ethanol: 100 mg/mL (262.8 mM), Sonication is recommended. PBS (pH 7.2): 5 mg/mL (13.14 mM), Sonication is recommended. DMF: 100 mg/mL (262.8 mM), Sonication is recommended. (< 1 mg/ml refers to the product slightly soluble or insoluble)
------------	------------------------------------------------------------------------------------------------------------------------------------------------------------------------------------------------------------------------------------------------------------------------------------------------------------------

Preparing Stock Solutions

	1mg	5mg	10mg
1 mM	2.628 mL	13.1399 mL	26.2798 mL
5 mM	0.5256 mL	2.628 mL	5.256 mL
10 mM	0.2628 mL	1.314 mL	2.628 mL
50 mM	0.0526 mL	0.2628 mL	0.5256 mL

Please select the appropriate solvent to prepare the stock solution, according to the solubility of the product in different solvents. Please use it as soon as possible.

Note: The dilution table applies only to solid products. For liquid products, please calculate the stock solution based on the stated concentration and/or density.

Inhibitor · Natural Compounds · Compound Libraries · Recombinant Proteins

This product is for Research Use Only · Not for Human or Veterinary or Therapeutic Use

Tel:781-999-4286 E_mail:info@targetmol.com Address:34 Washington Street,Wellesley Hills,MA 02481