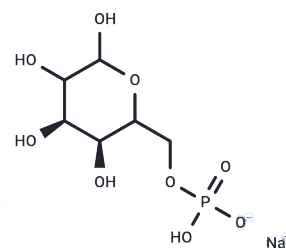


D-Glucose 6-phosphate sodium

Chemical Properties

CAS No. :	54010-71-8
Formula:	C ₆ H ₁₂ NaO ₉ P
Molecular Weight:	282.12
Storage:	Powder: -20°C for 3 years In solvent: -80°C for 1 year Actual storage temperature shall be subject to the COA.



Biological Description

Description	In cells, D-Glucose 6-phosphate sodium (G6P) is generated when glucose is phosphorylated by hexokinase or glucokinase or by the conversion of glucose-1-phosphate by phosphoglucomutase during glycogenolysis. G6P lies at the beginning of both glycolysis and the pentose phosphate pathways. It also can be stored as glycogen when blood glucose levels are high.
Targets(IC50)	Endogenous Metabolite

Solubility Information

Solubility	DMSO: Slightly soluble, H ₂ O: 200 mg/mL (708.92 mM), Sonication is recommended. (< 1 mg/ml refers to the product slightly soluble or insoluble)
------------	---

Preparing Stock Solutions

	1mg	5mg	10mg
1 mM	3.5446 mL	17.723 mL	35.4459 mL
5 mM	0.7089 mL	3.5446 mL	7.0892 mL
10 mM	0.3545 mL	1.7723 mL	3.5446 mL
50 mM	0.0709 mL	0.3545 mL	0.7089 mL

Please select the appropriate solvent to prepare the stock solution, according to the solubility of the product in different solvents. Please use it as soon as possible.

Note: The dilution table applies only to solid products. For liquid products, please calculate the stock solution based on the stated concentration and/or density.

Reference

Cappellini, M.D., and Fiorelli, G. Glucose-6-phosphate dehydrogenase deficiency. Lancet 371(9606), 64-74 (2008).

Inhibitor · Natural Compounds · Compound Libraries · Recombinant Proteins

This product is for Research Use Only · Not for Human or Veterinary or Therapeutic Use

Tel:781-999-4286 E_mail:info@targetmol.com Address:34 Washington Street,Wellesley Hills,MA 02481