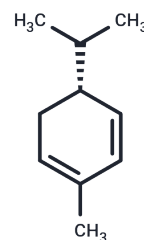


(R)-(-)- $\alpha$ -Phellandrene

## Chemical Properties

CAS No. :	4221-98-1
Formula:	C <sub>10</sub> H <sub>16</sub>
Molecular Weight:	136.23
Storage:	Powder: -20°C for 3 years   In solvent: -80°C for 1 year Actual storage temperature shall be subject to the COA.



## Biological Description

Description	(R)-(-)- $\alpha$ -Phellandrene ((R)-(-)- $\alpha$ -Phellandrene) is a monoterpene found in various essential oils such as lemongrass, ginger, peppermint, and eucalyptus. It is utilized as a flavoring agent in perfumes and foods and in the production of soaps, detergents, and other personal care products.
Targets(IC50)	Others,Antibacterial

## Preparing Stock Solutions

	1mg	5mg	10mg
1 mM	7.3405 mL	36.7026 mL	73.4053 mL
5 mM	1.4681 mL	7.3405 mL	14.6811 mL
10 mM	0.7341 mL	3.6703 mL	7.3405 mL
50 mM	0.1468 mL	0.7341 mL	1.4681 mL

Please select the appropriate solvent to prepare the stock solution, according to the solubility of the product in different solvents. Please use it as soon as possible.

Note: The dilution table applies only to solid products. For liquid products, please calculate the stock solution based on the stated concentration and/or density.

Inhibitor · Natural Compounds · Compound Libraries · Recombinant Proteins

This product is for Research Use Only · Not for Human or Veterinary or Therapeutic Use

Tel:781-999-4286 E\_mail:info@targetmol.com Address:34 Washington Street,Wellesley Hills,MA 02481