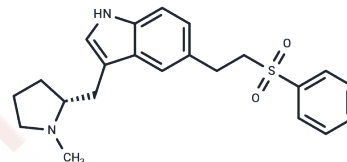


Eletriptan

Chemical Properties

CAS No. :	143322-58-1
Formula:	C ₂₂ H ₂₆ N ₂ O ₂ S
Molecular Weight:	382.52
Storage:	Powder: -20°C for 3 years In solvent: -80°C for 1 year Actual storage temperature shall be subject to the COA.



Biological Description

Description	Eletriptan, second-generation triptans used to treat migraines, is used as an abortion drug.
Targets(IC50)	Others,5-HT Receptor

Preparing Stock Solutions

	1mg	5mg	10mg
1 mM	2.6142 mL	13.0712 mL	26.1424 mL
5 mM	0.5228 mL	2.6142 mL	5.2285 mL
10 mM	0.2614 mL	1.3071 mL	2.6142 mL
50 mM	0.0523 mL	0.2614 mL	0.5228 mL

Please select the appropriate solvent to prepare the stock solution, according to the solubility of the product in different solvents. Please use it as soon as possible.

Note: The dilution table applies only to solid products. For liquid products, please calculate the stock solution based on the stated concentration and/or density.

Reference

Shelke S, Shahi S, Jadhav K, Dhamecha D, Tiwari R, Patil H. Thermoreversible nanoethosomal gel for the intranasal delivery of Eletriptan hydrobromide. *J Mater Sci Mater Med*. 2016 Jun;27(6):103. doi: 10.1007/s10856-016-5713-6. Epub 2016 Apr 18. PubMed PMID: 27091045.

Bhambri R, Mardekian J, Liu LZ, Schweizer E, Ramos E. A review of the pharmacoeconomics of eletriptan for the acute treatment of migraine. *Int J Gen Med*. 2015 Jan 12;8:27-36. doi: 10.2147/IJGM.S73673. eCollection 2015. Review. PubMed PMID: 25624770; PubMed Central PMCID: PMC4296958.

Kertesz DP, Trabekin O, Vanetik MS. Headache treatment after electroconvulsive treatment: a single-blinded trial comparator between eletriptan and paracetamol. *J ECT*. 2015 Jun;31(2):105-9. doi: 10.1097/YCT.000000000000179. PubMed PMID: 25181019.

Dias A, Franco E, Hebert K, Mercedes A. Myocardial infarction after taking eletriptan. *Rev Port Cardiol*. 2014 Jul-Aug;33(7-8):475.e1-3. doi: 10.1016/j.repc.2014.03.005. Epub 2014 Aug 23. English, Portuguese. PubMed PMID: 25155004.

Inhibitor · Natural Compounds · Compound Libraries · Recombinant Proteins

This product is for Research Use Only · Not for Human or Veterinary or Therapeutic Use

Tel:781-999-4286 E_mail:info@targetmol.com Address:34 Washington Street,Wellesley Hills,MA 02481