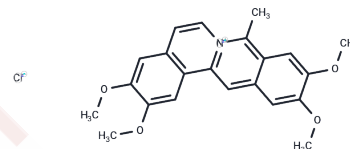


Coralyne chloride

Chemical Properties

CAS No. :	38989-38-7
Formula:	C ₂₂ H ₂₂ ClNO ₄
Molecular Weight:	399.87
Storage:	Powder: -20°C for 3 years In solvent: -80°C for 1 year Actual storage temperature shall be subject to the COA.



Biological Description

Description	Coralyne chloride is a protoberberine with strong anticancer activity. It can be used to prepare Coralyne derivatives, a fluorescent DNA-based molecular rectifier built into DNA duplexes through site-specific insertion. It acts as a topoisomerase I toxic molecule, inducing topoisomerase I-mediated DNA cleavage.
Targets(IC50)	Topoisomerase
In vitro	There is synergism between Coralyne and Paclitaxel on proliferation and migration of breast cancer cell lines. This study also showed that combinational drug treatment decreased the expression of ki-67 and there was an increase in pro apoptotic factor Bax with decreased in expression of anti-apoptotic factor Bcl-2 in breast cancer cell lines with negligible effect on normal breast cell line[2].

Solubility Information

Solubility	DMSO: 1.5 mg/mL (3.75 mM),Sonication is recommended. H ₂ O: 3 mg/mL (7.5 mM),Sonication is recommended. (< 1 mg/ml refers to the product slightly soluble or insoluble)
------------	--

Preparing Stock Solutions

	1mg	5mg	10mg
1 mM	2.5008 mL	12.5041 mL	25.0081 mL
5 mM	0.5002 mL	2.5008 mL	5.0016 mL
10 mM	0.2501 mL	1.2504 mL	2.5008 mL
50 mM	0.050 mL	0.2501 mL	0.5002 mL

Please select the appropriate solvent to prepare the stock solution, according to the solubility of the product in different solvents. Please use it as soon as possible.

Note: The dilution table applies only to solid products. For liquid products, please calculate the stock solution based on the stated concentration and/or density.

Reference

Khadka DB, Cho WJ. Topoisomerase inhibitors as anticancer agents: a patent update. *Expert Opin Ther Pat.* 2013 Aug;23(8):1033-56.

Zu S, Long Z, Zhang X, et al. A Comparative Study on the DNA Interactions and Biological Activities of Benzophenanthridine and Protoberberine Alkaloids. *Journal of Natural Products.* 2024

Seema Kumari, et al. Synergistic effects of coralyne and paclitaxel on cell migration and proliferation of breast cancer cells lines. *Biomed Pharmacother.* 2017 Jul;91:436-445.

Bhadra K, Kumar GS. Therapeutic potential of nucleic acid-binding isoquinoline alkaloids: binding aspects and implications for drug design. *Med Res Rev.* 2011 Nov;31(6):821-62.

Giri P, Suresh Kumar G. Molecular recognition of poly(A) targeting by protoberberine alkaloids: in vitro biophysical studies and biological perspectives. *Mol Biosyst.* 2010 Jan;6(1):81-8.

Inhibitor · Natural Compounds · Compound Libraries · Recombinant Proteins

This product is for Research Use Only · Not for Human or Veterinary or Therapeutic Use

Tel:781-999-4286 E_mail:info@targetmol.com Address:34 Washington Street,Wellesley Hills,MA 02481