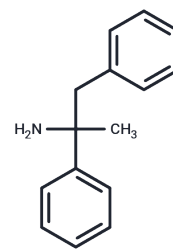


1,2-diphenylpropan-2-amine

Chemical Properties

CAS No. :	118910-28-4
Formula:	C ₁₅ H ₁₇ N
Molecular Weight:	211.3
Storage:	Powder: -20°C for 3 years In solvent: -80°C for 1 year Actual storage temperature shall be subject to the COA.



Biological Description

Description	1,2-Diphenylpropan-2-amine is the monohydrochloride metabolite of the (S,R)-isomer of Remacemide. 1,2-Diphenylpropan-2-amine has anticonvulsant properties.
Targets(IC50)	Others

Solubility Information

Solubility	DMSO: 50 mg/mL (236.63 mM), Sonication is recommended. (< 1 mg/ml refers to the product slightly soluble or insoluble)
------------	---

Preparing Stock Solutions

	1mg	5mg	10mg
1 mM	4.7326 mL	23.663 mL	47.3261 mL
5 mM	0.9465 mL	4.7326 mL	9.4652 mL
10 mM	0.4733 mL	2.3663 mL	4.7326 mL
50 mM	0.0947 mL	0.4733 mL	0.9465 mL

Please select the appropriate solvent to prepare the stock solution, according to the solubility of the product in different solvents. Please use it as soon as possible.

Note: The dilution table applies only to solid products. For liquid products, please calculate the stock solution based on the stated concentration and/or density.

Inhibitor · Natural Compounds · Compound Libraries · Recombinant Proteins

This product is for Research Use Only · Not for Human or Veterinary or Therapeutic Use

Tel: 781-999-4286 E_mail: info@targetmol.com Address: 34 Washington Street, Wellesley Hills, MA 02481