

SRI-29132

## Chemical Properties

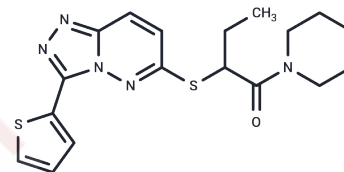
CAS No. : 1482305-44-1

Formula: C<sub>18</sub>H<sub>21</sub>N<sub>5</sub>O<sub>2</sub>S

Molecular Weight: 387.52

Storage: Powder: -20°C for 3 years | In solvent: -80°C for 1 year

Actual storage temperature shall be subject to the COA.



## Biological Description

Description	SRI-29132 is potent; highly permeant of the blood-brain barrier; and selective for LRRK2 kinase activity, therefore effective in attenuating pro-inflammatory responses in macrophages and in rescuing neurite retraction phenotypes in neurons.
Targets(IC50)	Others

## Preparing Stock Solutions

	1mg	5mg	10mg
1 mM	2.5805 mL	12.9026 mL	25.8051 mL
5 mM	0.5161 mL	2.5805 mL	5.161 mL
10 mM	0.2581 mL	1.2903 mL	2.5805 mL
50 mM	0.0516 mL	0.2581 mL	0.5161 mL

Please select the appropriate solvent to prepare the stock solution, according to the solubility of the product in different solvents. Please use it as soon as possible.

Note: The dilution table applies only to solid products. For liquid products, please calculate the stock solution based on the stated concentration and/or density.

## Reference

Liu Z, Galembo RA Jr, Fraser KB, Moehle MS, Sen S, Volpicelli-Daley LA, DeLucas LJ, Ross LJ, Valiyaveetil J, Moukha-Chafiq O, Pathak AK, Ananthan S, Kezar H, White EL, Gupta V, Maddry JA, Suto MJ, West AB. Unique functional and structural properties of the LRRK2 protein ATP-binding pocket. *J Biol Chem.* 2014 Nov 21;289(47):32937-51. doi: 10.1074/jbc.M114.602318. Epub 2014 Sep 16. PubMed PMID: 25228699; PubMed Central PMCID: PMC4239640.

**Inhibitor · Natural Compounds · Compound Libraries · Recombinant Proteins**

This product is for Research Use Only · Not for Human or Veterinary or Therapeutic Use

Tel:781-999-4286 E\_mail:info@targetmol.com Address:34 Washington Street,Wellesley Hills,MA 02481