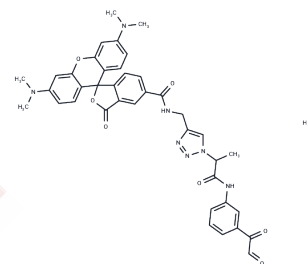


## Citrulline-specific Probe-Rhodamine

## Chemical Properties

CAS No. :	2309313-01-5
Formula:	C39H37N7O8
Molecular Weight:	731.75
Storage:	Keep away from direct sunlight Powder: -20°C for 3 years   In solvent: -80°C for 1 year <i>Actual storage temperature shall be subject to the COA.</i>



## Biological Description

Description	Protein arginine deiminases (PADs) catalyze the posttranslational modification of arginine residues on proteins to form citrulline, which plays a large role in regulating gene expression. Abnormally high PAD activity has been observed in a host of human diseases. Citrulline-specific probe-rhodamine is a highly sensitive, rhodamine phenylglyoxal-based fluorophore that specifically detects protein citrullination via a chemoselective reaction between glyoxal and citrulline. This chemical probe (comprised of a single isomer) is capable of reacting with any citrulline-containing protein and can be analyzed with fluorescent imaging (excitation 532 nm; emission 580 nm). When added at 100 $\mu$ M for 30 minutes at acidic pH, this probe has a reported limit of detection of ~10 ng for citrullinated histone H3 and ~1 ng for autodeiminated PAD4.
Targets(IC50)	Others

## Solubility Information

Solubility	DMF: 1 mg/mL (1.37 mM),Sonication is recommended. Acetonitrile:H2O (2:1): 1 mg/mL (1.37 mM),Sonication is recommended. (< 1 mg/ml refers to the product slightly soluble or insoluble)
------------	--

### Preparing Stock Solutions

---

	<b>1mg</b>	<b>5mg</b>	<b>10mg</b>
1 mM	1.3666 mL	6.8329 mL	13.6659 mL
5 mM	0.2733 mL	1.3666 mL	2.7332 mL
10 mM	0.1367 mL	0.6833 mL	1.3666 mL
50 mM	0.0273 mL	0.1367 mL	0.2733 mL

---

Please select the appropriate solvent to prepare the stock solution, according to the solubility of the product in different solvents. Please use it as soon as possible.

Note: The dilution table applies only to solid products. For liquid products, please calculate the stock solution based on the stated concentration and/or density.

**Inhibitor · Natural Compounds · Compound Libraries · Recombinant Proteins**

This product is for Research Use Only · Not for Human or Veterinary or Therapeutic Use

Tel:781-999-4286 E\_mail:info@targetmol.com Address:34 Washington Street,Wellesley Hills,MA 02481