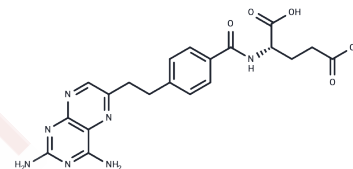


10-Deazaaminopterin

Chemical Properties

CAS No. :	52454-37-2
Formula:	C ₂₀ H ₂₁ N ₇ O ₅
Molecular Weight:	439.42
Storage:	Powder: -20°C for 3 years In solvent: -80°C for 1 year Actual storage temperature shall be subject to the COA.



Biological Description

Description	10-Deazaaminopterin is a poly-gamma-glutamyl metabolite of the experimental anticancer drug, a folic acid antagonist, antineoplastic agent enzyme inhibitor.
Targets(IC50)	Others,DHFR

Preparing Stock Solutions

	1mg	5mg	10mg
1 mM	2.2757 mL	11.3786 mL	22.7573 mL
5 mM	0.4551 mL	2.2757 mL	4.5515 mL
10 mM	0.2276 mL	1.1379 mL	2.2757 mL
50 mM	0.0455 mL	0.2276 mL	0.4551 mL

Please select the appropriate solvent to prepare the stock solution, according to the solubility of the product in different solvents. Please use it as soon as possible.

Note: The dilution table applies only to solid products. For liquid products, please calculate the stock solution based on the stated concentration and/or density.

Reference

- Marchi E, O'Connor OA. Safety and efficacy of pralatrexate in the treatment of patients with relapsed or refractory peripheral T-cell lymphoma. *Ther Adv Hematol*. 2012 Aug;3(4):227-35. doi: 10.1177/2040620712445330. PubMed PMID: 23606933; PubMed Central PMCID: PMC3627334.
- Zain J, O'Connor O. Pralatrexate: basic understanding and clinical development. *Expert Opin Pharmacother*. 2010 Jul;11(10):1705-14. doi: 10.1517/14656566.2010.489552. Review. PubMed PMID: 20509772.
- Marchi E, Paoluzzi L, Scotto L, Seshan VE, Zain JM, Zinzani PL, O'Connor OA. Pralatrexate is synergistic with the proteasome inhibitor bortezomib in in vitro and in vivo models of T-cell lymphoid malignancies. *Clin Cancer Res*. 2010 Jul 15;16(14):3648-58. doi: 10.1158/1078-0432.CCR-10-0671. Epub 2010 May 25. PubMed PMID: 20501616.
- Zain JM, Marchi E. Pralatrexate - from bench to bedside. *Drugs Today (Barc)*. 2010 Feb;46(2):91-9. doi: 10.1358/dot.2010.46.2.1439260. PubMed PMID: 20393637.

Inhibitor · Natural Compounds · Compound Libraries · Recombinant Proteins

This product is for Research Use Only · Not for Human or Veterinary or Therapeutic Use

Tel:781-999-4286 E_mail:info@targetmol.com Address:34 Washington Street,Wellesley Hills,MA 02481