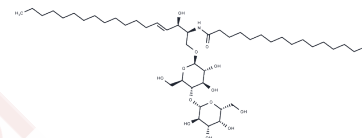


## C16 Lactosylceramide (d18:1/16:0)

## Chemical Properties

CAS No. :	4201-62-1
Formula:	C46H87NO13
Molecular Weight:	862.18
Storage:	Powder: -20°C for 3 years   In solvent: -80°C for 1 year Actual storage temperature shall be subject to the COA.



## Biological Description

Description	C16 Lactosylceramide is an endogenous bioactive sphingolipid. It forms membrane microdomains with Lyn kinase and the $\alpha$ subunits of inhibitory G protein-coupled receptors (GPCRs), suggesting a role in cell signaling. Plasma levels of C16 lactosylceramide are elevated in insulin-resistant cattle. C16 Lactosylceramide is also upregulated in a mouse model of Niemann-Pick type C1 disease, a neurodegenerative cholesterol-sphingolipid lysosomal storage disorder.
Targets(IC50)	Others,Endogenous Metabolite

## Solubility Information

Solubility	Chloroform:Methanol:H2O (2:1:0.1): Soluble ( $< 1$ mg/ml refers to the product slightly soluble or insoluble)
------------	--

## Preparing Stock Solutions

	1mg	5mg	10mg
1 mM	1.1599 mL	5.7993 mL	11.5985 mL
5 mM	0.232 mL	1.1599 mL	2.3197 mL
10 mM	0.116 mL	0.5799 mL	1.1599 mL
50 mM	0.0232 mL	0.116 mL	0.232 mL

Please select the appropriate solvent to prepare the stock solution, according to the solubility of the product in different solvents. Please use it as soon as possible.

Note: The dilution table applies only to solid products. For liquid products, please calculate the stock solution based on the stated concentration and/or density.

**Inhibitor · Natural Compounds · Compound Libraries · Recombinant Proteins**

This product is for Research Use Only · Not for Human or Veterinary or Therapeutic Use

Tel:781-999-4286 E\_mail:info@targetmol.com Address:34 Washington Street,Wellesley Hills,MA 02481