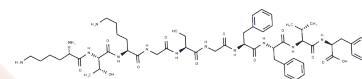


## Ige decapeptide

## Chemical Properties

CAS No. :	70669-29-3
Formula:	C55H80N12O13
Molecular Weight:	1117.3
Storage:	Keep away from moisture Powder: -20°C for 3 years   In solvent: -80°C for 1 year <small>Actual storage temperature shall be subject to the COA.</small>



## Biological Description

Description	Ige decapeptide is a peptide.
-------------	-------------------------------

## Preparing Stock Solutions

	1mg	5mg	10mg
1 mM	0.895 mL	4.4751 mL	8.9501 mL
5 mM	0.179 mL	0.895 mL	1.790 mL
10 mM	0.0895 mL	0.4475 mL	0.895 mL
50 mM	0.0179 mL	0.0895 mL	0.179 mL

Please select the appropriate solvent to prepare the stock solution, according to the solubility of the product in different solvents. Please use it as soon as possible.

Note: The dilution table applies only to solid products. For liquid products, please calculate the stock solution based on the stated concentration and/or density.

## Reference

Drake-Lee A, Jones V, Lewin I, Nayyar S, Wells A, Stanworth D. Levels of substance P and IgE decapeptide in nasal polyp fluid and matching sera: a preliminary study. *J Laryngol Otol.* 1996 Mar;110(3):225-7. PubMed PMID: 8730355.

Stanworth DR, Coleman JW, Khan Z. Essential structural requirements for triggering of mast cells by a synthetic peptide comprising a sequence in the C epsilon 4 domain of human IgE. *Mol Immunol.* 1984 Mar;21(3):243-7. PubMed PMID: 6425646.

Coleman JW, Holgate ST, Church MK, Godfrey RC. Immunoglobulin E decapeptide-induced 5-hydroxytryptamine release from rat peritoneal mast cells. Comparison with corticotropin-(1-24)-peptide, polyarginine, polylysine and antigen. *Biochem J.* 1981 Sep 15;198(3):615-9. PubMed PMID: 7326027; PubMed Central PMCID: PMC1163309.

Burt DS, Stanworth DR. Changes in cellular levels of cyclic AMP in rat mast cells during secretion of histamine induced by immunoglobulin E decapeptide and ACTH(1-24) peptide. Comparison with immunological and ionophore triggers. *Biochim Biophys Acta.* 1983 Jun 2;762(3):458-65. PubMed PMID: 6189527.

**Inhibitor · Natural Compounds · Compound Libraries · Recombinant Proteins**

This product is for Research Use Only · Not for Human or Veterinary or Therapeutic Use

Tel:781-999-4286 E\_mail:info@targetmol.com Address:34 Washington Street,Wellesley Hills,MA 02481